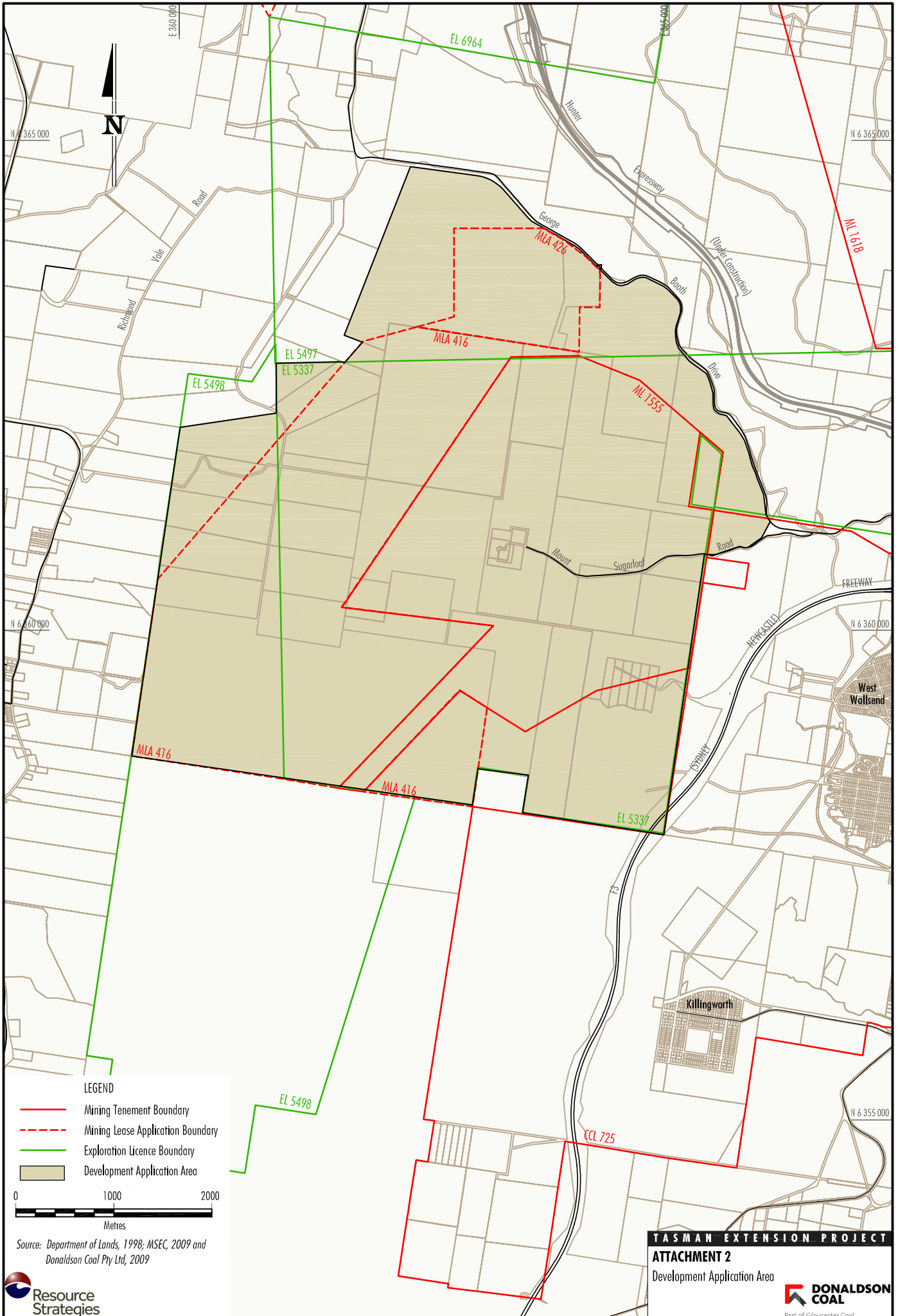


Tasman Extension Project Environmental Impact Statement

ATTACHMENT 2

DEVELOPMENT APPLICATION AREA AND REAL PROPERTY DESCRIPTIONS



| Tenure Type | Lot Number | Deposited Plan Number |
|-------------|------------|-----------------------|
| Freehold | 101 | 1164569 |
| Freehold | 102 | 1164569 |
| Freehold | 103 | 1164569 |
| Freehold | 2 | 809377 |
| Freehold | 3 | 1061633 |
| Freehold | 4 | 1061633 |
| Freehold | 5 | 1061633 |
| Freehold | 6 | 1061633 |
| Freehold | 7 | 1061633 |
| Freehold | 8 | 1061633 |
| Freehold | 9 | 1061633 |
| Freehold | 10 | 1061633 |
| Freehold | 11 | 1061633 |
| Freehold | 12 | 1061633 |
| Freehold | 13 | 1061633 |
| Freehold | 14 | 1061633 |
| Freehold | 15 | 1061633 |
| Freehold | 1 | 207238 |
| Freehold | 1 | 960528 |
| Freehold | 1 | 960529 |
| Freehold | 4 | 960529 |
| Freehold | 1 | 960530 |
| Freehold | 95 | 755262 |
| Freehold | 124 | 755262 |
| Freehold | 125 | 755262 |
| Freehold | 126 | 755262 |
| Freehold | 221 | 1034182 |
| Freehold | 222 | 1034182 |
| Freehold | 52 | 706484 |
| Freehold | 22 | 223395 |
| Freehold | 1 | 175522 |
| Freehold | 21 | 624214 |
| Freehold | 1 | 231108 |
| Freehold | 51 | 706484 |
| Freehold | 1 | 923509 |
| Freehold | 1 | 1050996 |
| Freehold | 2 | 1050996 |
| Freehold | 7 | 813135 |
| Freehold | 2 | 551917 |
| Freehold | 1 | 1046942 |
| Freehold | 2 | 1039968 |
| Freehold | Part 1 | 1039968 |

| Tenure Type | Lot Number | Deposited Plan Number |
|---|--|-----------------------|
| Crown | 121 | 755262 |
| Crown | 1 | 551918 |
| Crown | 21 | 223395 |
| Crown | 1 | 338999 |
| Crown | 7021 | 1075979 |
| Crown | 7022 | 1075973 |
| Crown | 7023 | 1075973 |
| National Parks and Wildlife Service | 104 | 755262 |
| National Parks and Wildlife Service | 2 | 231108 |
| National Parks and Wildlife Service | 1 | 551917 |
| State Forests of NSW | 94 | 755262 |
| State Forests of NSW | 76 | 755244 |
| State Forests of NSW | 108 | 755244 |
| Cessnock City Council or Crown | Other roads located within, between or adjacent to the above parcels of land | |
| Part NSW State Forest (Heaton State Forest) | Crown land forming part Heaton State Forest No 122 dedicated 27 May 1914 and subsequent extensions | |
| Part State Conservation Area (Sugarloaf State Conservation Area) | Crown land forming part Sugarloaf State Conservation Area | |