

Part of Gloucester Coal

ABOUT DONALDSON COAL

Donaldson Coal owns the Tasman Underground Mine, Abel Underground Mine and Donaldson Mine in the Newcastle Coalfield. Donaldson Coal is a wholly owned subsidiary of Gloucester Coal Ltd.

Donaldson Coal has been operating for more than 10 years with a strong environmental management record.

Donaldson Coal's operations have created more than 350 local jobs, and indirectly hundreds of other jobs are supported

through the use of local contractors and service providers.

Donaldson Coal actively supports local communities. Since 2001 the Donaldson Job Creation Trust has allocated \$1 million to job training and education. As part of Donaldson Coal's commitments for the Abel Underground Mine, the Donaldson Community Welfare Trust is providing \$250,000 over five years to education and community needs such as the "News in Education" program and the Donaldson Conservation Trust has allocated \$1 million for local conservation projects over 10 years.

ABEL UNDERGROUND MINE

The Abel Underground Mine is an underground coal mining operation south of John Renshaw Drive approximately 23 km northwest of the Port of Newcastle, in the Newcastle Coalfield.

The Abel Underground Mine was approved in June 2007 and underground mining began in early 2008.

The Abel Underground Mine is approved to produce approximately 4.5 million tonnes of run-of-mine (ROM) coal per year using bord and pillar mining methods with a combination of total and partial pillar extraction in the Upper and Lower Donaldson seams.

OVERVIEW OF THE ABEL MODIFICATION

Donaldson Coal wishes to introduce shortwall mining (120 m wide compared to 165 m wide bord and pillar panels) and longwall mining in some areas to increase the efficiency of the Abel Underground Mine operations (refer to figure). Consistent with Donaldson Coal's previous commitment, no shortwall or longwall mining would occur beneath privately-owned residences without the prior agreement of the landowner.

The modification to the Abel Underground Mine would involve mining only within the

existing approved area and coal seams and the modified mine layout would be developed to meet existing approved subsidence management commitments (e.g. commitments for residences, third order streams and alluvium associated with Blue Gum Creek).

As required under NSW legislation, Donaldson Coal would seek a modification to the existing Abel Underground Mine Project Approval under section 75W of the *Environmental Planning and Assessment Act*,

1979. The flowchart over the page provides a summary of the process.

An Environmental Assessment of the proposed changes is being prepared by recognised experts. The Environmental Assessment will be prepared in consultation with the community, relevant State, Federal and Local government agencies and other relevant stakeholders.

COMMUNITY INFORMATION SESSIONS

Donaldson Coal will be holding Community Information Sessions at the Black Hill Public School to discuss the modification to the Abel Underground Mine. All members of the local community with an interest in the modification are welcome to attend.

The information sessions are an opportunity to learn more about the modification and how Donaldson Coal will be meeting existing approved subsidence management commitments and addressing the potential subsidence impacts of mining on aspects such as built infrastructure, surface water and biodiversity.

Donaldson Coal representatives involved in the preparation of the Environmental Assessment will be available for one-on-one discussions.

KEY INFORMATION

Location: Black Hill Public School, 408 Black Hill Road, Black Hill

When: Tues 6 Dec, Midday - 4.30 pm & 6.30 pm - 8.30 pm
 Wednesday 7 December, 6.30 pm - 8.30 pm

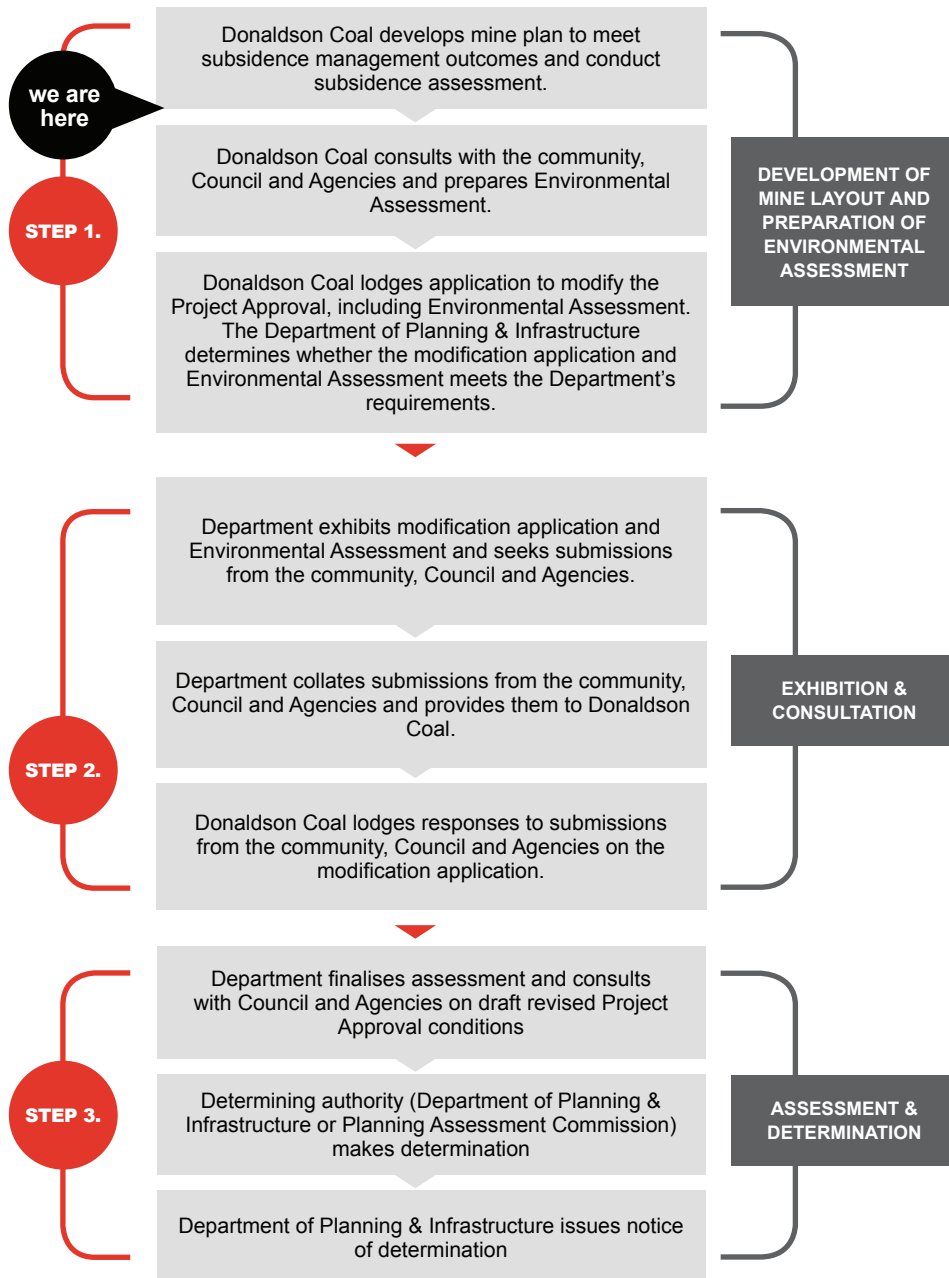
Sandwiches and refreshments will be provided at the information sessions.

For further information, please contact Phil Brown or Adam Heeney (contact details over page).



Project Approval Modification Typical Steps

Under section 75W of the *Environmental Planning and Assessment Act, 1979*



COMMUNITY CONSULTATION

Ongoing community consultation will be conducted with landowners and the broader community as part of the environmental assessment process. The Abel Underground Mine Community Consultative Committee (CCC) will also be kept informed with the status of the modification.

The Environmental Assessment of the proposed modification will be made available for public review and comment in 2012.

Donaldson Coal will continue to consult with the community, landholders and regulatory agencies during implementation of the modified mine plan.

ABEL UNDERGROUND MINE ENVIRONMENTAL AND COMMUNITY ENQUIRIES

Environmental Enquiries:

Phil Brown
Environmental Manager
Phone: 1800 111 271

Community Enquiries:

Adam Heeney
Community Liaison Officer
Phone: 0400 446 700

For more information on Donaldson Coal, please visit:
www.gloucestercoal.com.au

