

# Community Consultative Committee

---

MAY 2016

Reaching new horizons together



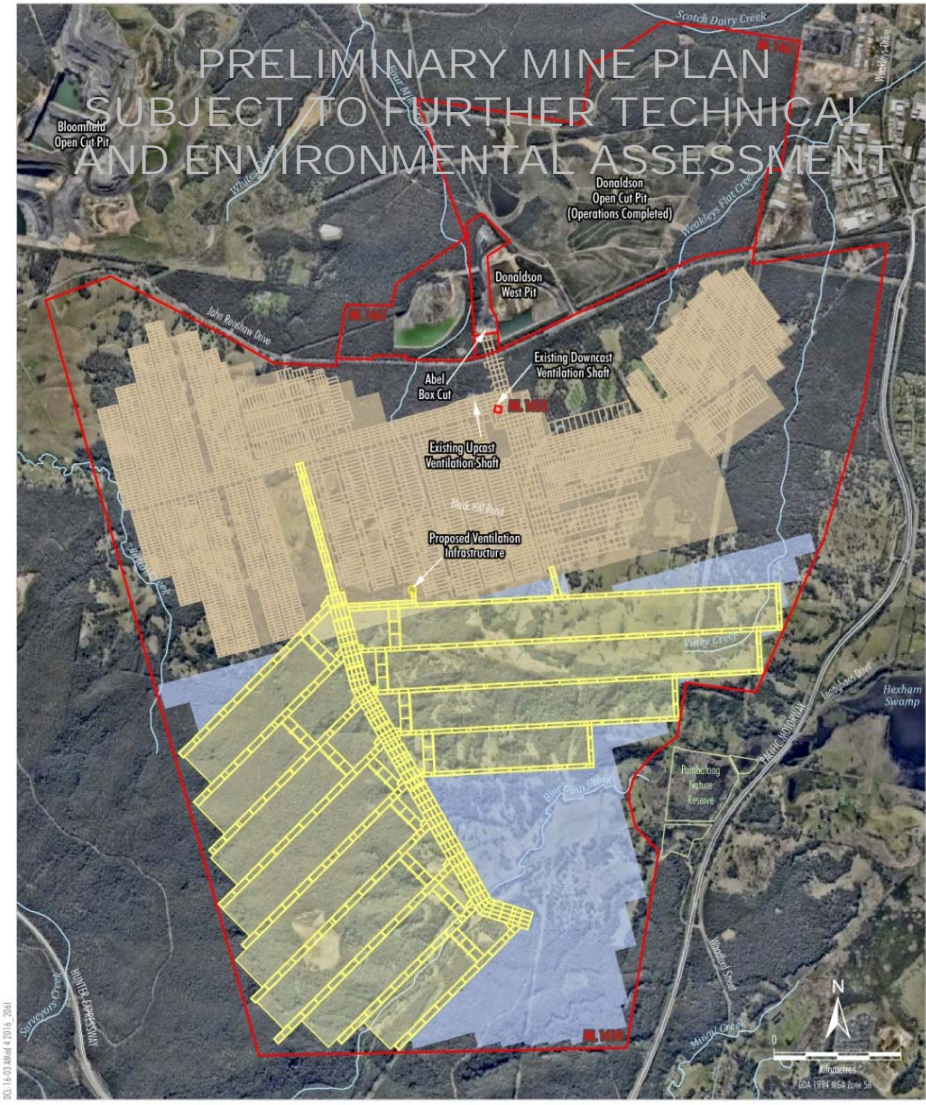
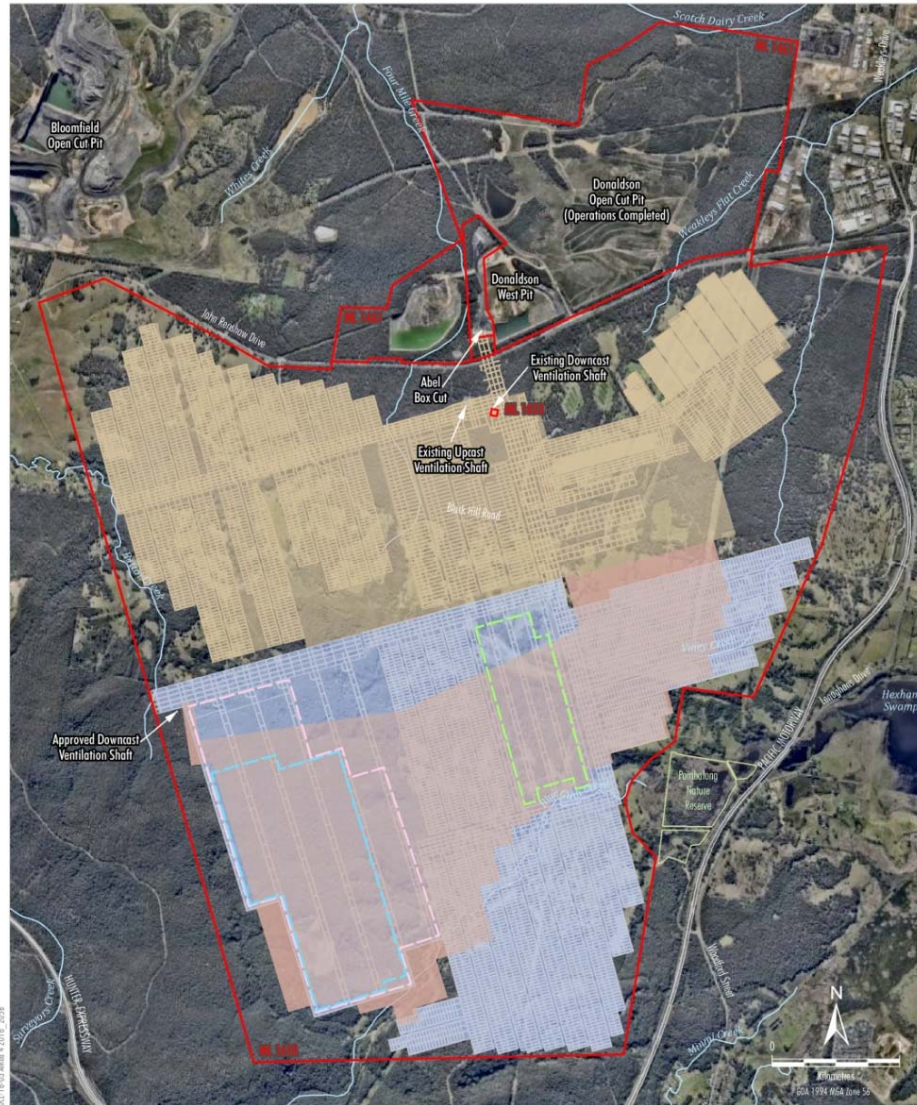
# Current Operations

- Operations moved to 'care and maintenance' on 2 May in response to ongoing market challenges.
- Environmental Management of the Donaldson site will continue in accordance with existing approvals.
- Majority of Donaldson employees have been redeployed:
  - Austar underground operations (near Cessnock).
  - Ashton underground operations (near Singleton).
  - Moolarben Underground (near Mudgee).

# Future for Abel

- Yancoal is working to consider all options for the potential further mining of the Abel underground.
- Feasibility studies are underway considering:
  - Latest geological and coal quality information.
  - Current and anticipated future market conditions.
- Studies are looking at a revised longwall mining layout within the Lower Donaldson Seam.

# Mine Layout Under Consideration



# Process for Consideration

- Mine layout is not yet finalised and will be informed by:
  - Feasibility studies (technical and economic).
  - Environmental studies.
  - Discussions with affected landholders.
- CCC will be kept informed of progress.