

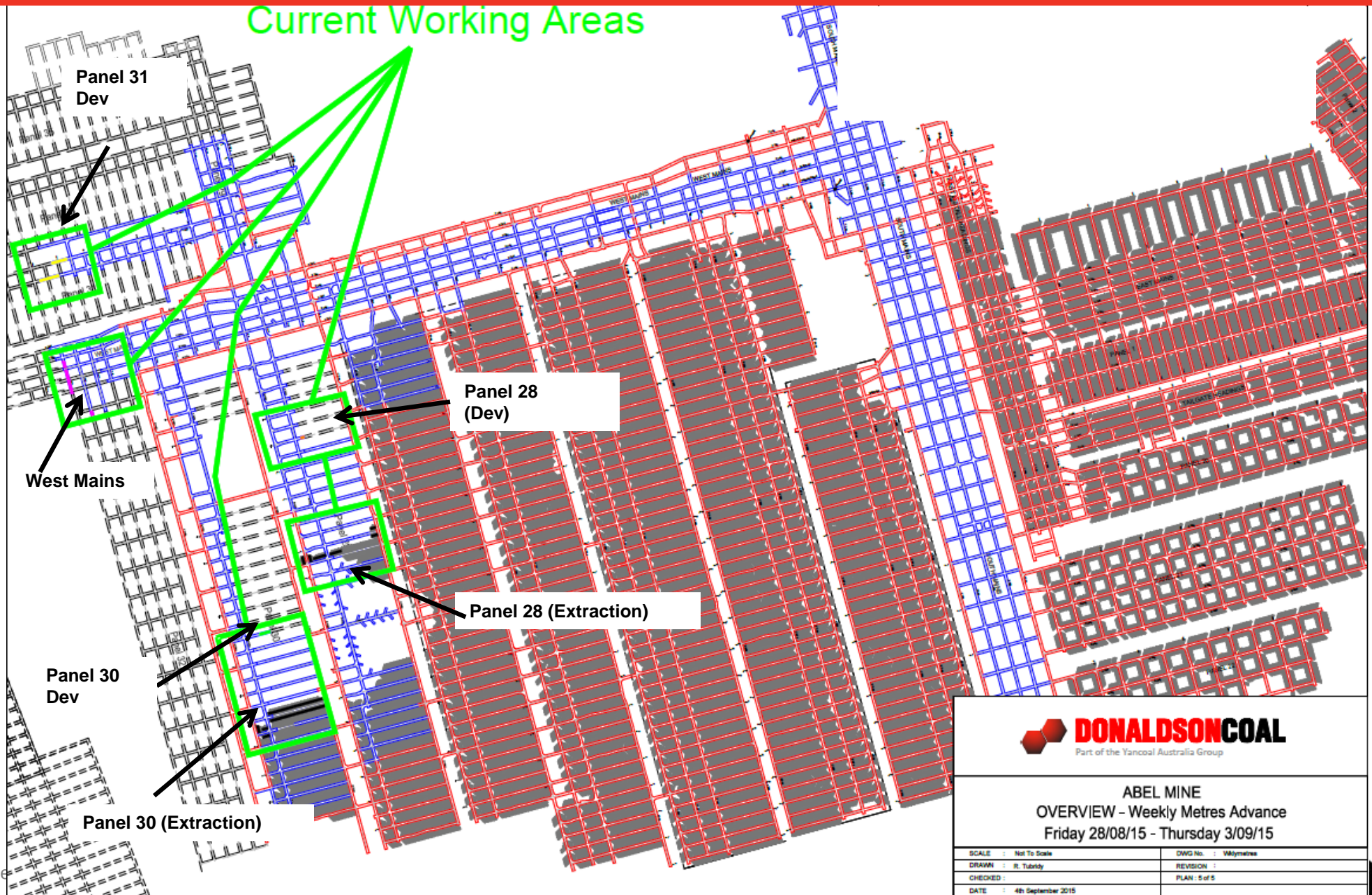
Donaldson Coal Abel Mine CCC Meeting

- 14 September 2015

Abel Update

- **BUSINESS RESTRUCTURE - REDUCE OPERATING LOSS**
 - Decision made to restructure the Abel mine to reduce the current operating loss.
 - From 10th August 2015, the following changes are effective:
 - Mine out existing inventory, while assessing future operation options, (1 extractor with 2 development units)
 - The mine will operate as per the current shift arrangements (five days per week with maintenance changed to midweek)
 - The mine will be idle on weekends to further reduce costs
 - Reduction of approximately 170 employees.
 - Reviewing longwall options

Abel Current Mining Areas



Production ytd September 2015

	Actual	Budget	Variance
Development (m)	18,306	24,653	-6,346
Development (t)	336,122	515,977	-149,855
Extraction (t)	1,133,930	1,113,520	20,410
Total UG ROM (t)	1,500,052	1,629,497	-129,445

Environmental Update

- 3 Community Complaints
 - 2 noise related to trucks
 - 1 related to odour
- No Environmental Incident reported.
- Alarna Bristow now on maternity leave.
- Police attended incident in Bushland Conservation Area relating to theft of equipment from site.
- Macroinvertebrate sampling undertaken in two locations on Blue Gum Creek
- Aboriginal inspections of SMP Area 4 by MLALC. Awaiting Final Report.
- Environmental talk to Benwerrin Rural Fire Service team members
- Submitted the Abel underground Certificate of Compliance to the EPA
- Flora Fauna winter monitoring undertaken in Bushland Conservation Area.
- Independent audit of Abel Conditions of Consent undertaken.

Community Support Program



CALL FOR SUBMISSIONS BY
30 September 2015

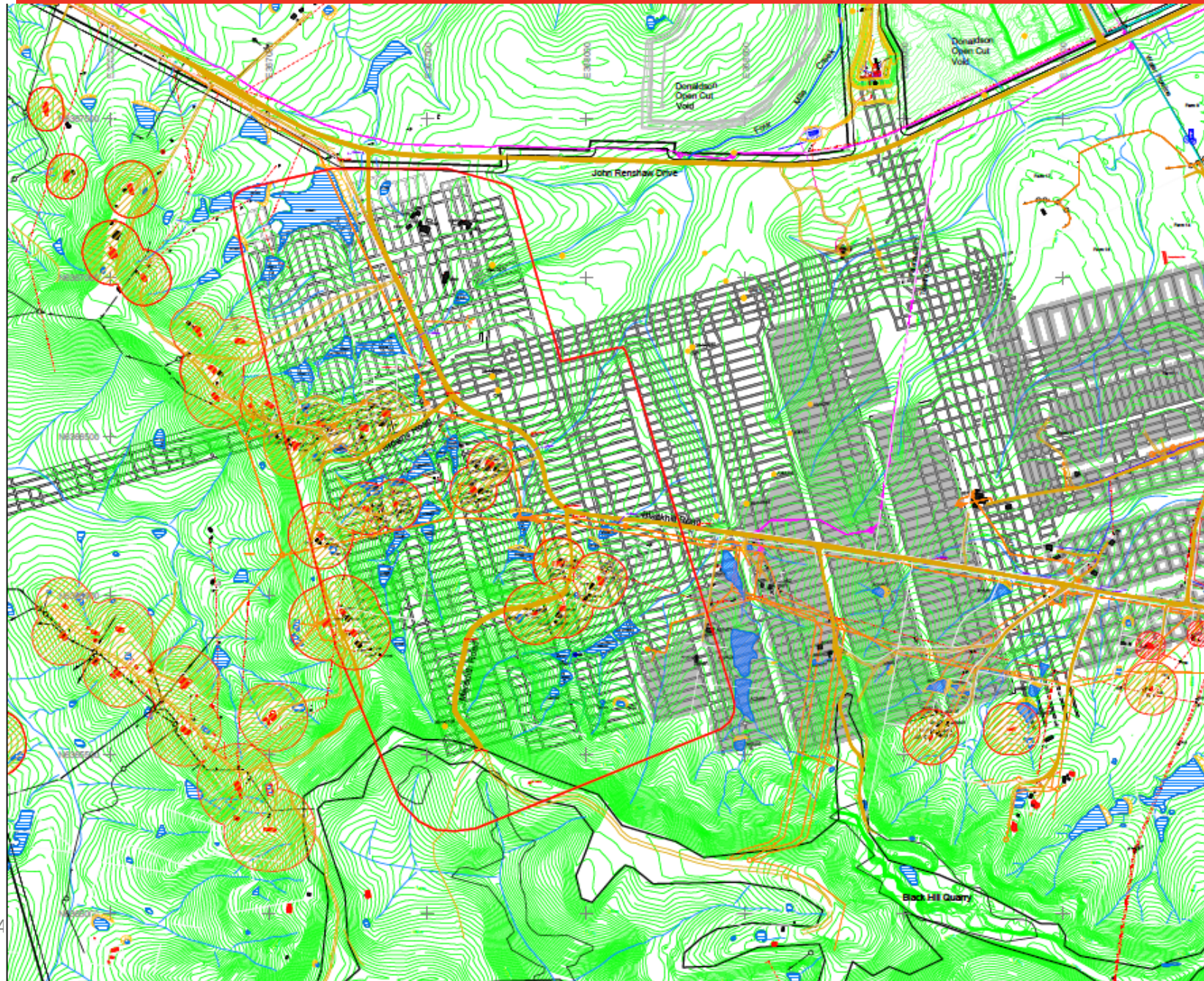
Community Support Program

The application period is now open for Donaldson Coal's Community Support Program. The Program is designed to assist a wide range of community groups and projects in the Lower Hunter near the Donaldson, Abel and Tasman mines.

Applications for the current allocation close **30 September 2015**.



Abel SMP/EP Area 4



- Legend**
- SMP Application Area 4
 - Galaxy Mining Boundary
 - Geopline Workings
 - Proposed Workings
 - Coal Storage C1
 - Upstream Drain
 - Valley Over Structure
 - Principal Roadline
 - Road Track
 - Surface Contour
 - Power Line
 - Power Pole
 - Flow Data Gage
 - Traffic Control Gage
 - Alignment
 - Subsidence Control Zone
 - Under Water Pipeline
 - Sony Station ▲ SMP 124
 - Pump Dam
 - General Place
 - Spring ●
 - Pipes
 - Gulch
 - Box Number
(refer to MSEC & SMP report) ▲ A0502

DONALDSON COAL
Part of the Yancoal Australia Group

ABEL MINE
SMP APPLICATION - AREA 4
PLAN 2 - NATURAL & MAN MADE FEATURES

SCALE	1:1000	DWG No.	44x1002.dwg
DRAWN	M. Wright	REVISED	8 (21/05/14)
CHECKED	T. Subealand		
DATE	23rd May 2014		

OAL

SMP/Extraction Plan 4 Update

- Variation 3 Approved 13.8.15
- 1 x PSMP developed
- 3 x premining building reports complete
- Final repairs complete on Blackhill Rd for Panel 27 (25/03/15 – 19/05/15).
- Premining dilapidation report complete for Blackhill Rd / Meredith Rd for Panel 28



Mining Under Blackhill Road



Blackhill Road Under Mining Update



Mining under Blackhill Road & Meredith Road, Black Hill Notice of potential impact requiring repairs

Abel Underground Mine wishes to advise that mining in the Upper Donaldson Seam is planned to pass under a section of Blackhill Road and Meredith Road from mid September 2015 for a period of approximately 4 months.

A Risk Assessment was held in November 2014 to assess the risks associated with mining under Blackhill Road and Meredith Road. A Management plan to control the impacts from mining under these roads has been developed in consultation with Cessnock City Council, The Mine Subsidence Board, The Department of Industry, The Department of Planning & Environment and representatives from the local community.

As per the Management Plan, traffic management will include:

- 60km/hour speed limit through the sections of road that will be potentially impacted;
- A road monitoring crew will be in place 24/7 on Blackhill Road with personnel on standby to carry out repairs as required; and
- Lighting plants and variable message boards will be in place through the night.

Mining will cause the road surface to subside along a 100m and 200m section of Meredith Road and a 600m section of Blackhill Road located approximately 2.5km west of Blackhill Primary School. The extent of the affected part of the road will be sign posted for identification. Monitoring and temporary repairs to the road are expected to take around 4 months depending on the progress of mining and weather.

Abel Underground Mine will continue to work with the Cessnock City Council, the local community and the Mine Subsidence Board to ensure the road remains in a safe and serviceable condition with minimal inconvenience to the public.

For more information please contact:

Phillip Brown
Environment & Community Manager
T:1800 111 271

- Monitoring of Blackhill Road for Panel 28 is due to commence within the next week. (letter box drop and Notice published in local newspaper and Blackhill School newsletter)

14 September 20



MOD 4 Update

Studies complete

On hold