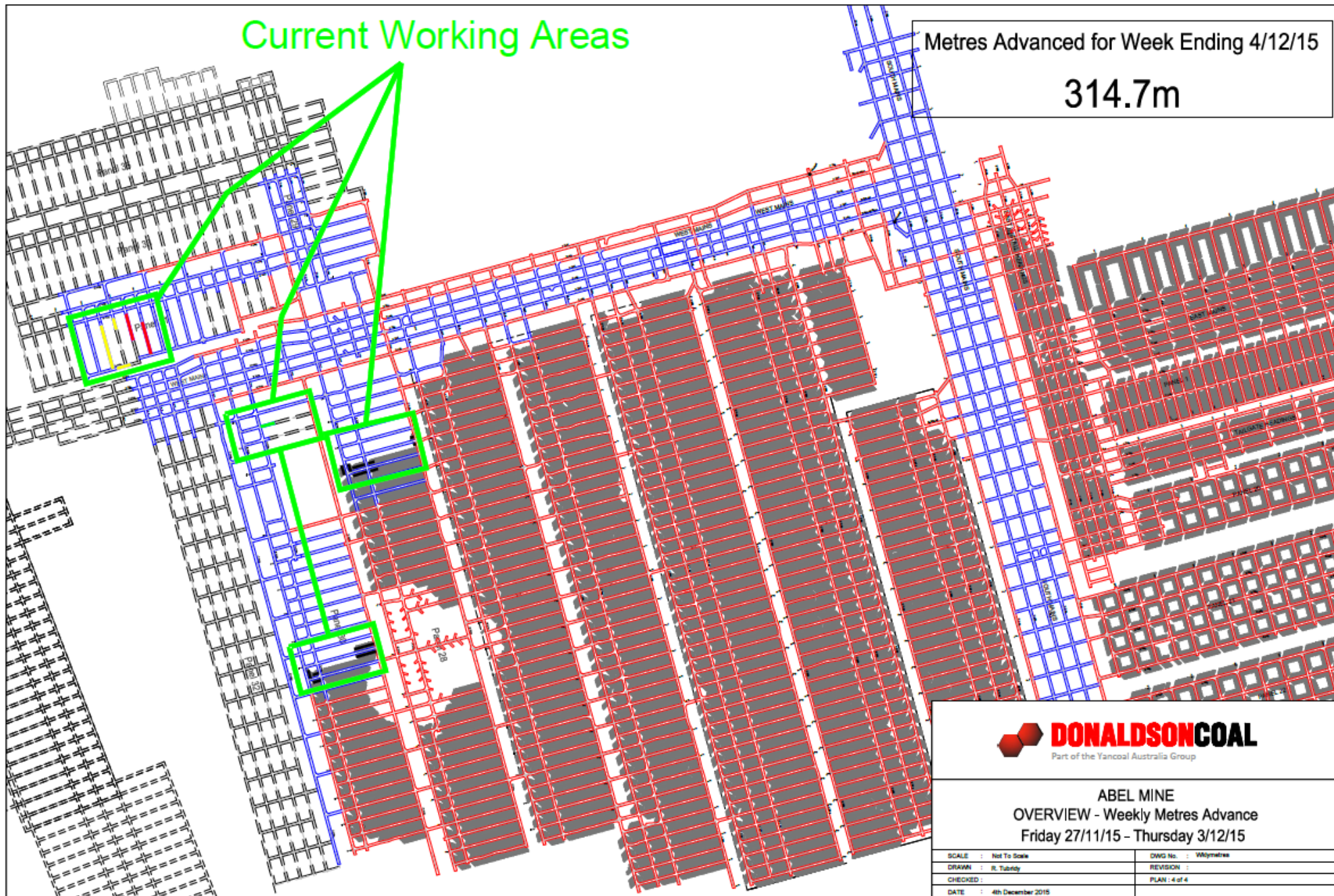




Donaldson Coal Abel Mine CCC Meeting

- 7 December 2015

Abel Current Mining Areas



Production ytd November 2015

	Actual	Budget	Variance
Development (m)	22,139	33,844	-11,705
Development (t)	442,774	710,806	-268,032
Extraction (t)	1,311,599	1,409,603	-179,004
Total UG ROM (t)	1,754,373	2,201,407	-447,034

Environmental Update

- 2 Community Complaints
 - 2 calls regarding subsidence on Blackhill Road and Meredith Road.
- No Environmental Incident reported.

SLR was engaged by Donaldson Coal Pty Ltd to conduct quarterly noise monitoring surveys for Donaldson Coal Mine and Abel Coal Mine in accordance with the Abel Coal Mine Noise Monitoring Program, dated 27 May 2007.

Donaldson Open Cut Mine has ceased production and all major earthworks on the site have been finalised. Therefore, compliance noise monitoring for the Donaldson Open Cut Mine is no longer required.

The results of the operator-attended noise measurements conducted at six (6) focus locations surrounding the mine site are included in **Table 2** to **Table 7**.

Abel Mine operations at the CHPP were only faintly audible at Location L during the evening and night-time. Abel portal operations were not observed to be audible at any other locations during the monitoring period. Contributed noise levels from Abel Mine did not exceed noise emission goals (including night-time sleep arousal criteria) and were in compliance with the *Abel Mine Project Approval* at all locations.

Winter flora fauna monitoring

A total of 49 fauna species were detected during the 2015 winter monitoring period, including 36 birds, 12 mammals and one amphibian. Of these, two owls Masked Owl, (*Tyto novaehollandiae*) and Powerful Owl (*Ninox strenua*), two microbats Little Bent-winged Bat, (*Miniopterus australis*); and Eastern Bent-winged Bat, (*Miniopterus orianae oceanensis*), and one megabat Grey-headed Flying Fox (*Pteropus poliocephalus*) are listed as Vulnerable under the *Threatened Species Conservation Act 1995* (NSW). The Grey-headed Flying Fox is also listed as Vulnerable under the *Environmental Protection and Biodiversity Conservation Act 1999*.

Fauna monitoring



Plate 1: Two Sugar Gliders (*Petaurus breviceps*) in a nest box in Q5



Plate 2: Brown Antechinus (*Antechinus stuartii*) from a nest box in Q8

Community Support Program

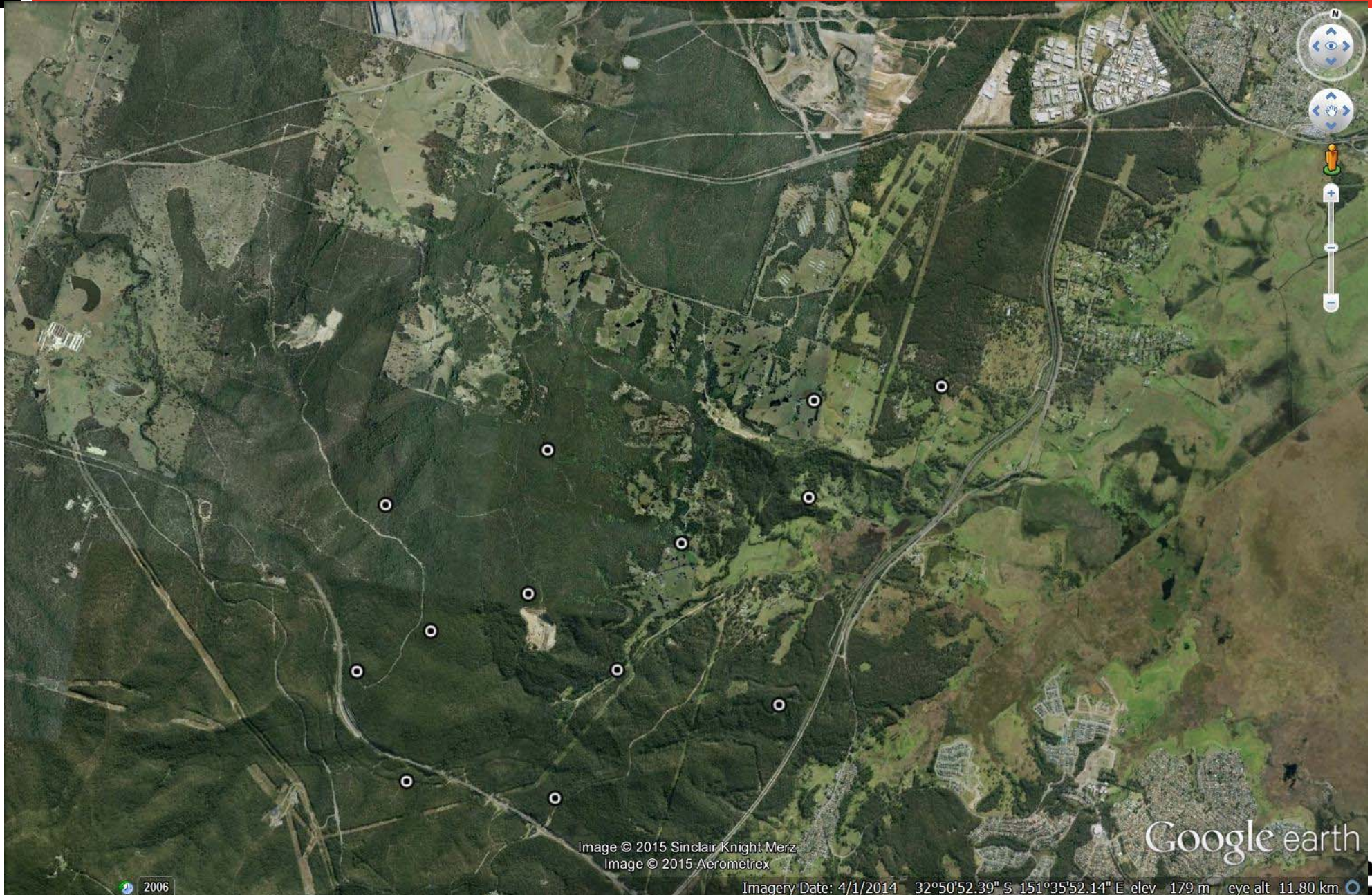
To date Donaldson has supported 60 projects to the value of \$227,000.

The successful projects sponsored during this round of funding were:

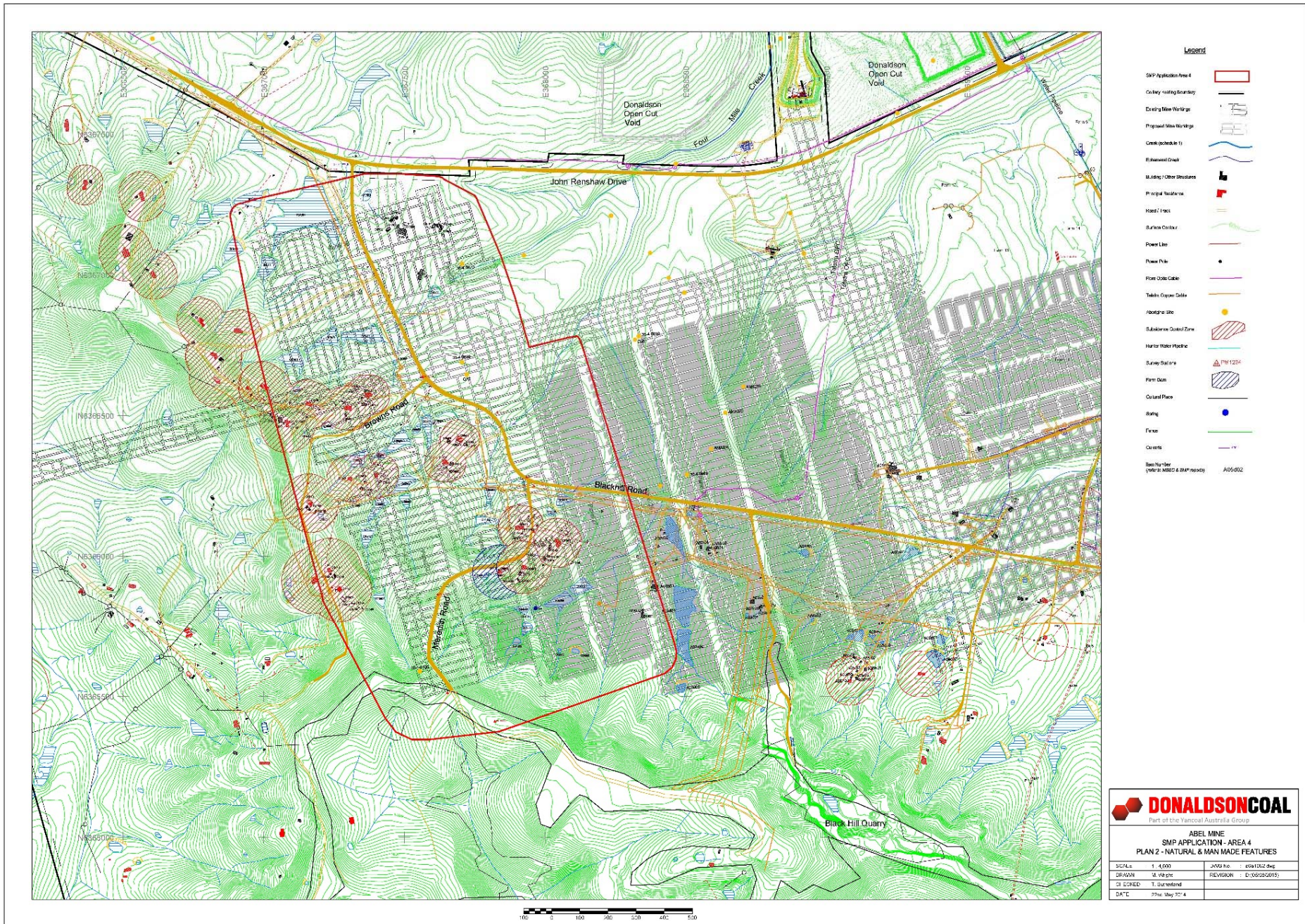
- Abermain Public School
- Bellbird School
- Cessnock Multipurpose Childrens Centre
- Dymock's Children Charities/ Telarah Public School
- Hunter River Agricultural and Horticultural Assoc.
- Kurri Early Childhood Centre
- Mindaribba Warriors
- Stanford Merthyr Infants



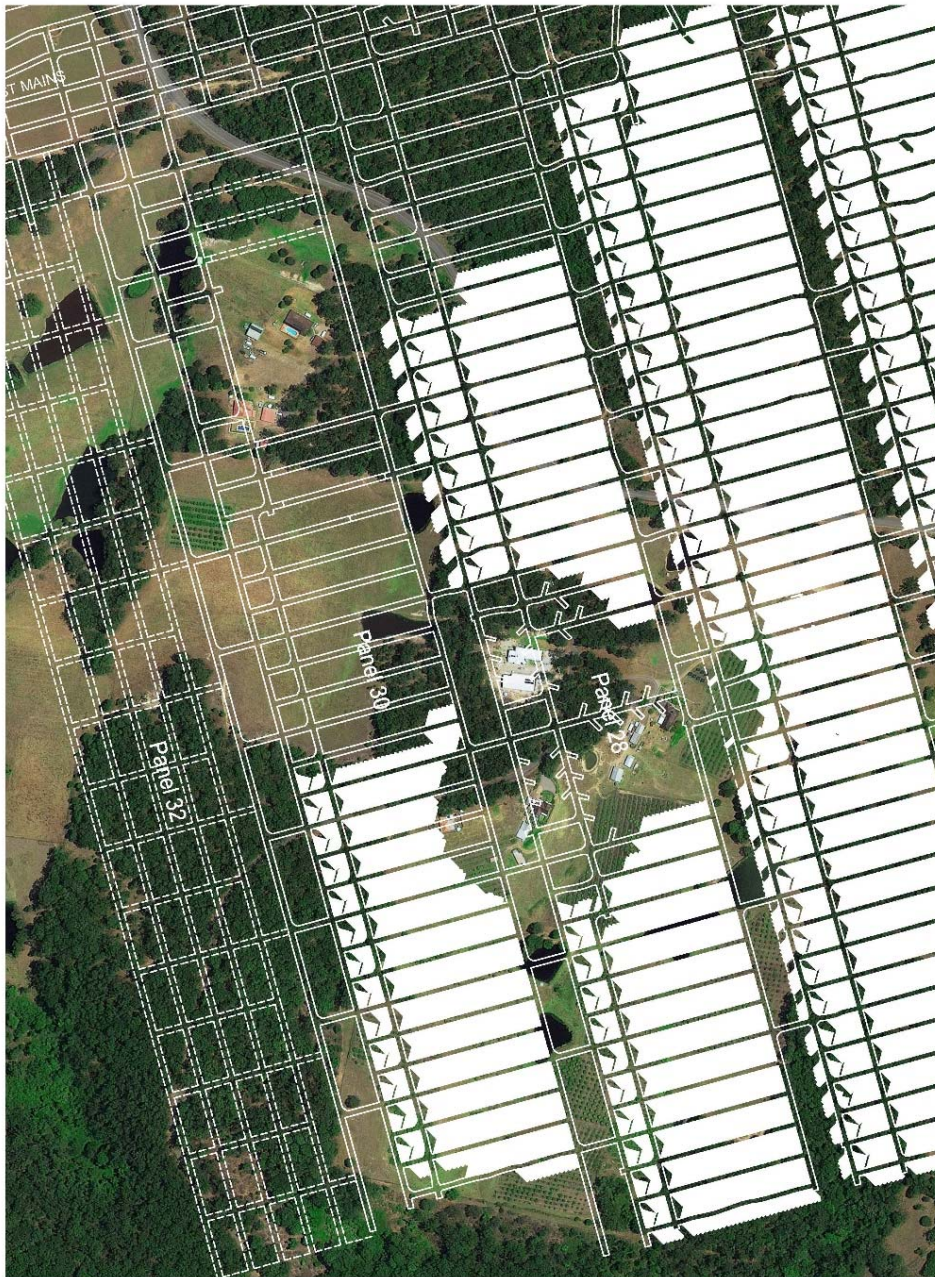
Proposed 2016 Exploration Drilling



Abel SMP/EP Area 4



Mining Under Blackhill Road



- Monitoring of Blackhill Road for Panel 28 is ongoing