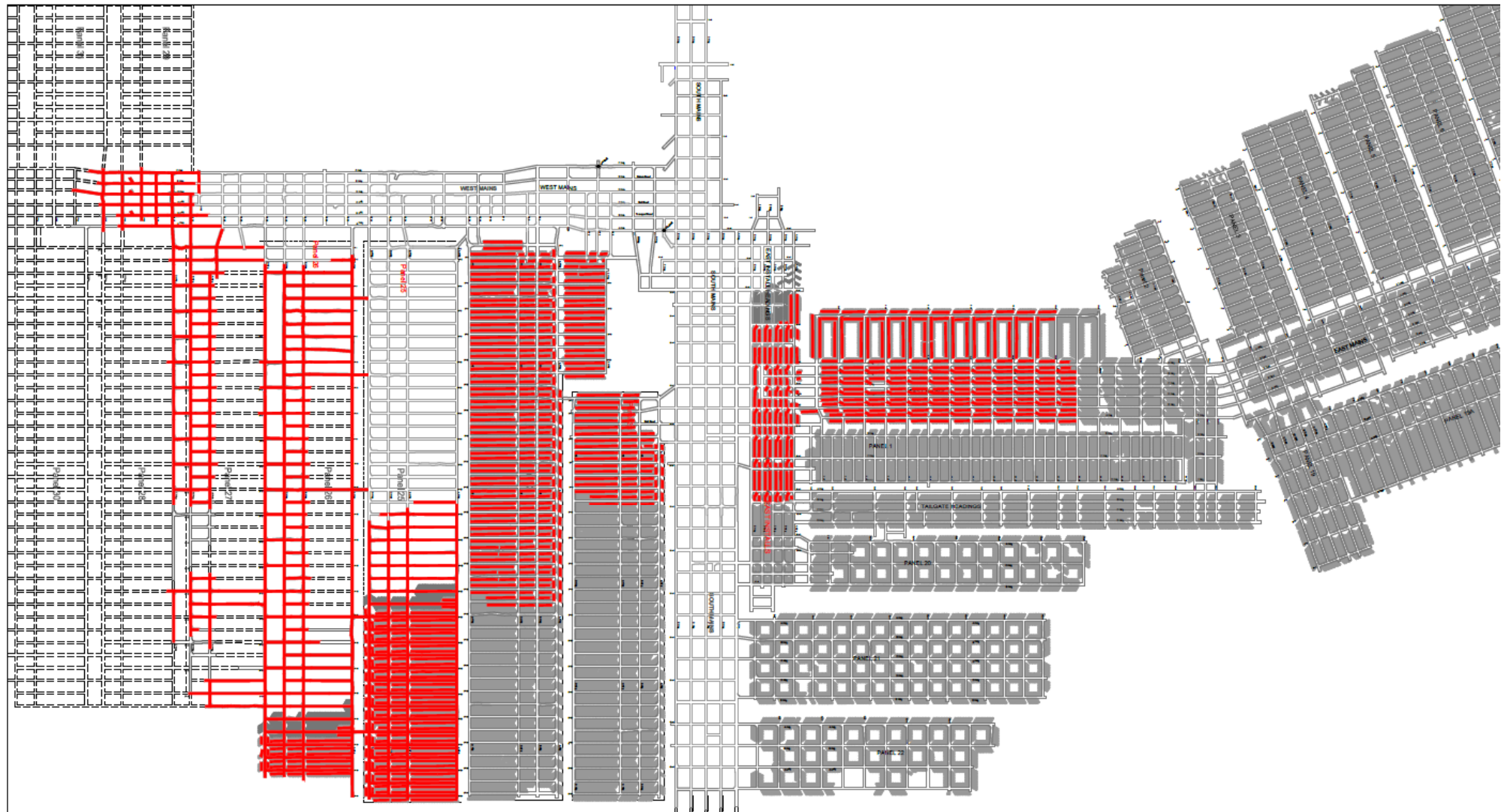


A photograph of a vibrant rainbow arching across a cloudy, overcast sky. The rainbow's colors are clearly visible, transitioning from red on the left to violet on the right. The sky is filled with soft, grey clouds. In the foreground, the dark silhouettes of trees and a forest line the bottom of the frame, with some taller trees on the left and right sides.

Donaldson Coal Abel Mine CCC Meeting

15 September 2014

Abel Mine Development – 2014 YTD



Metres Advance for
January - August 2014
24,390.2



ABEL MINE
Monthly Metres Advance
January - August 2014



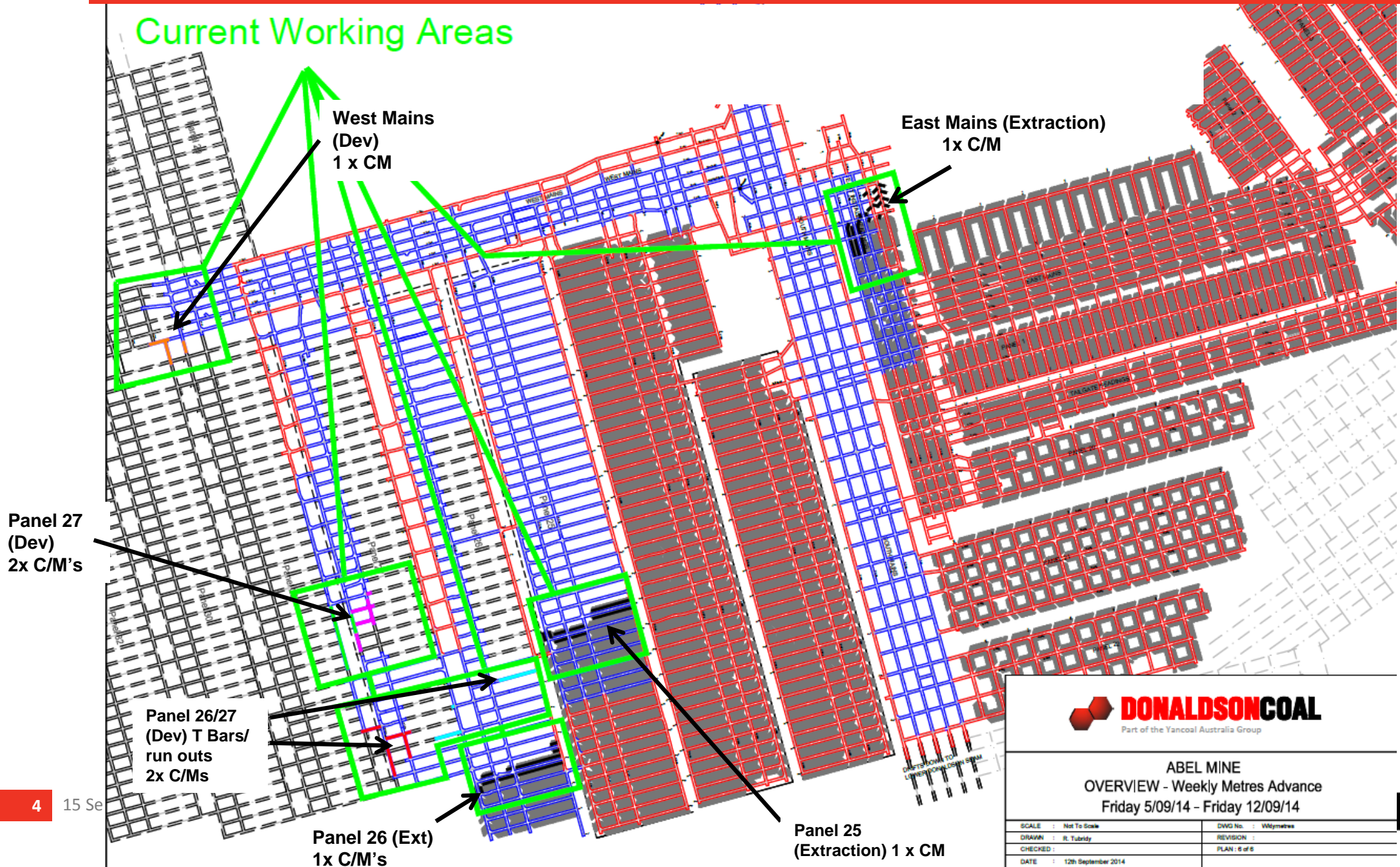
SCALE : N.T.S.	DWG No. : Mthlymetres
DRAWN : M. Wright	REVISION :

Abel Mine YTD Production (to end Aug 2014)

	Actual	Budget	Variance
Development (m)	24,390	30,233	-5,843
Development (t)	488,000	660,627	-172,627
Extraction (t)	1,168,000	1,198,224	-30,224
Total UG ROM (t)	1,655,400	1,858,851	-203,451

Abel Current Mining Areas

Current Working Areas



ABEL MINE
 OVERVIEW - Weekly Metres Advance
 Friday 5/09/14 - Friday 12/09/14

SCALE : Not To Scale	DWG No. : W09metres
DRAWN : R. Tubidy	REVISION :
CHECKED :	PLAN : 6 of 6
DATE : 12th September 2014	

Environmental Update

- No Community Complaints
- No Environmental Incidents reported.
- Abel Annual Environmental Management Report submitted to DoPE and DRE.
- Submitted the revised Aboriginal, Noise, Water and Rehabilitation Management Plans to the DoPE.
- Submitted revised Abel Mining Operations Plan and received approval.
- Received Noise Monitoring report for June 2014. No issues identified.
- Abel EPA Annual Return submitted.

Pambalong Wetlands Study

- *“This document reports on results of the sixth annual baseline monitoring event at Pambalong Nature Reserve. Detected during this survey were*
- *101 flora species and*
- *114 fauna species comprising eight frog, 20 mammal (14 bat), one reptile, and 85 bird species.*
- *Threatened species recorded included 5 microbats and one bird (Varied Sittella).*
- *No new flora species were recorded and no significant changes to the spatial extent of vegetation communities were observed”.*
- *Level and water quality monitor to be installed by Tom Farrell Institute sponsored by the Donaldson Conservation Trust*

Noise Monitoring - June 2014

Based on the results and observations from operator attended surveys, contributed noise levels from Donaldson Mine have been demonstrated to comply with noise emission goals for all periods.

Abel Mine operations at the CHPP were only faintly audible at Location G, I and L during the night-time monitoring period. Abel portal operations were not observed to be audible at any other locations during the monitoring period and as such contributed noise levels from Abel Mine did not exceed noise emission goals (including night-time sleep arousal criteria) and were in compliance with the Abel Mine *Project Approval* at all locations.

A comparison of ambient LA10 and LA90 noise levels recorded during the current monitoring period (June 2014), the baseline monitoring period, the last monitoring period (March 2014), and the coinciding monitoring period from last year (June 2013) has been conducted.

An assessment of the rail noise impact was also undertaken, determining compliance with the criteria stated in **Section 2.2**.

Winter Flora Fauna Monitoring

- A total of 45 fauna species were detected during the 2014 winter monitoring period
- 32 birds
- 12 mammals
- 1 amphibian.
- Three of these, two microbats, Little Bentwing-bat (*Miniopterus australis*) and Southern Myotis (*Myotis macropus*) and one owl, Masked Owl (*Tyto novaehollandiae*) are listed as Vulnerable under the *Threatened Species Conservation Act 1995* (NSW).

Winter Flora Fauna Study



Short-beaked Echidna crossing the main entrance road in the vicinity of an area which was recently rehabilitated

Community Support Program



CALL FOR SUBMISSIONS BY
30 September 2014

Community Support Program

The application period is now open for Donaldson Coal's Community Support Program. The Program is designed to assist a wide range of community groups and projects in the Lower Hunter near the Donaldson, Abel and Tasman mines.

Applications for the current allocation close **30 September 2014**.

To download the guidelines and an application form, please visit www.doncoal.com.au and click on top "Community" tab, then Community Support Program.



SMP Update – Area 3

- A revised Public Safety Management Plan for P26 was submitted to DTIRIS and approved
- DMMS complete for Harding property (including dam failure assessment)
- P26 subs monitoring program submitted to PSE and approved
- Telstra Management plan for P26 was prepared and submitted to DITIRIS and approved
- Subsidence remediation work carried out on 1 property in relation to cracking (Quarry)

Blackhill Road Under Mining Update

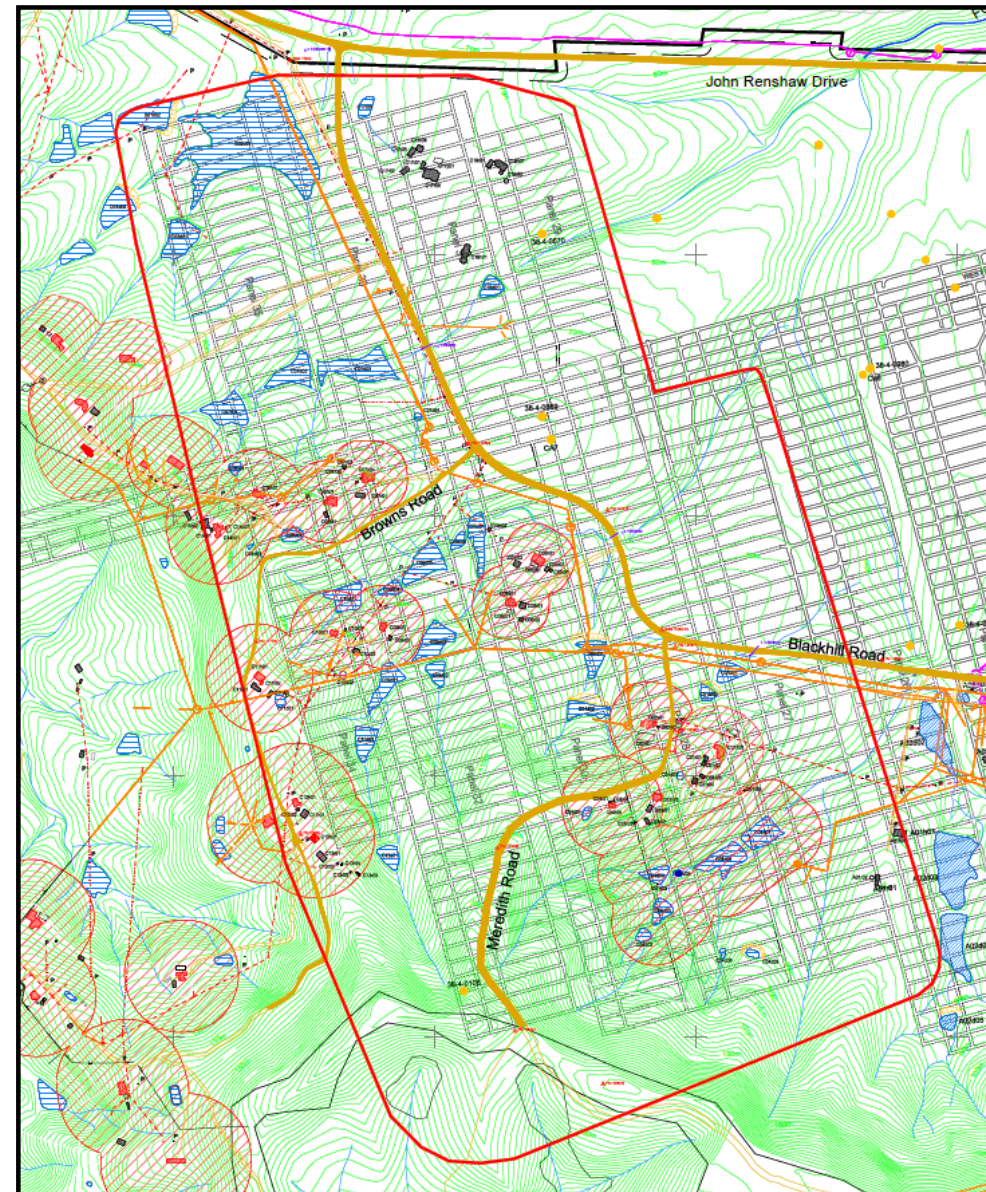


- Panel 25 is expect to commencing impacting Blackhill road in next 4 weeks (similar monitoring program to be implemented)
 - Letter box drop and notice published in newspaper within the next few weeks
- Panel 26 – Jan/ Feb 2015
- Panel 27 – Mar/April 2015



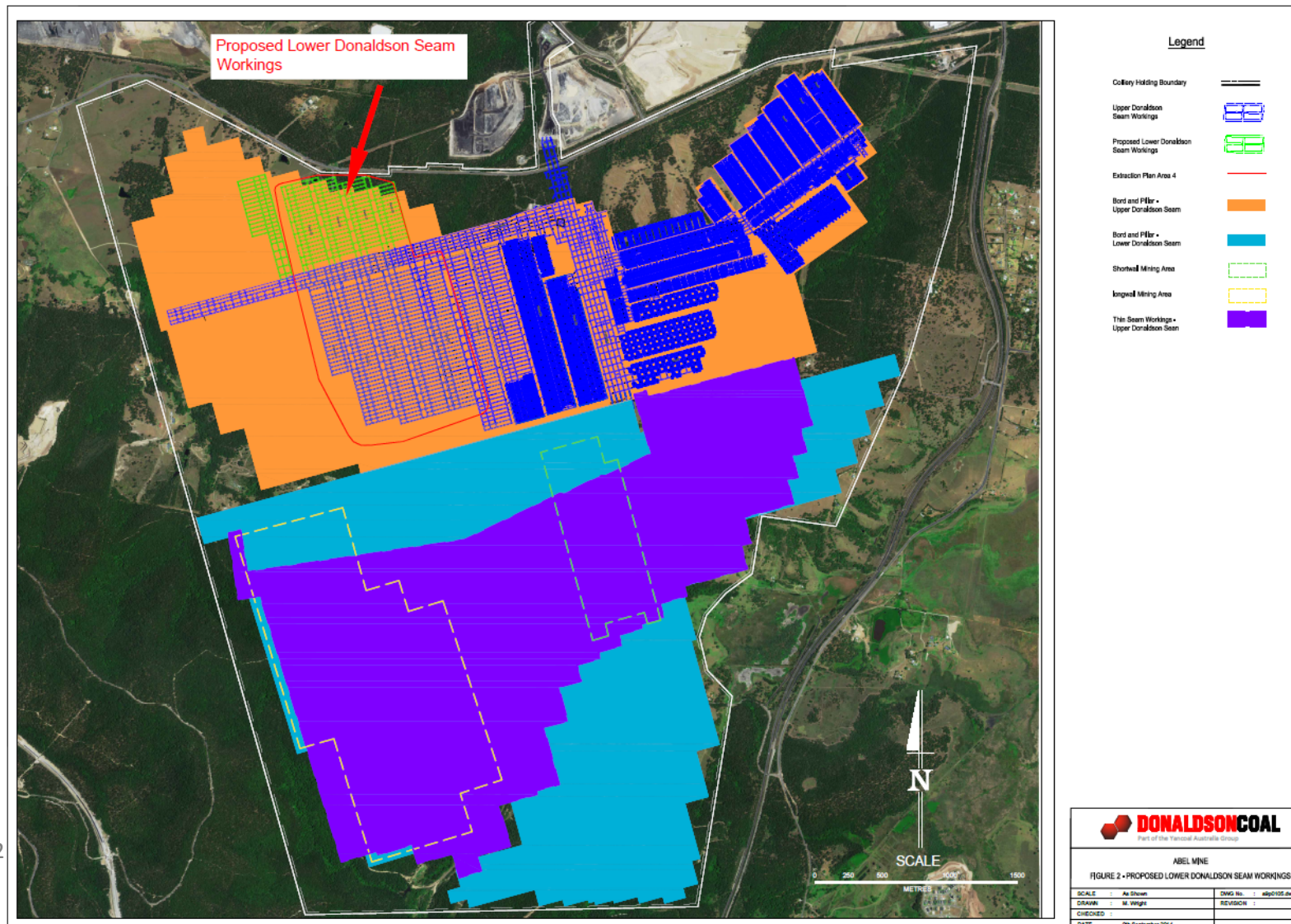
SMP/Extraction Plan Area 4 Update

- DRE has finalised their assessment of Area 4. DPE still to finalise their assessment - Expected Approval date 22 Sep 2014
- Ausgrid Powerline MP finalised
- Telstra MP finalised for Panels 27,28,29
- Slope Stability Assessment being conducted by SCT/GHD
- Commenced Osborn PSMP and DMMS
- Meeting held with 1 property owner in relation to the large dam above Panel 33/35 (Talley Dam)
- Panel 27 to commence once EP/SMP approved.

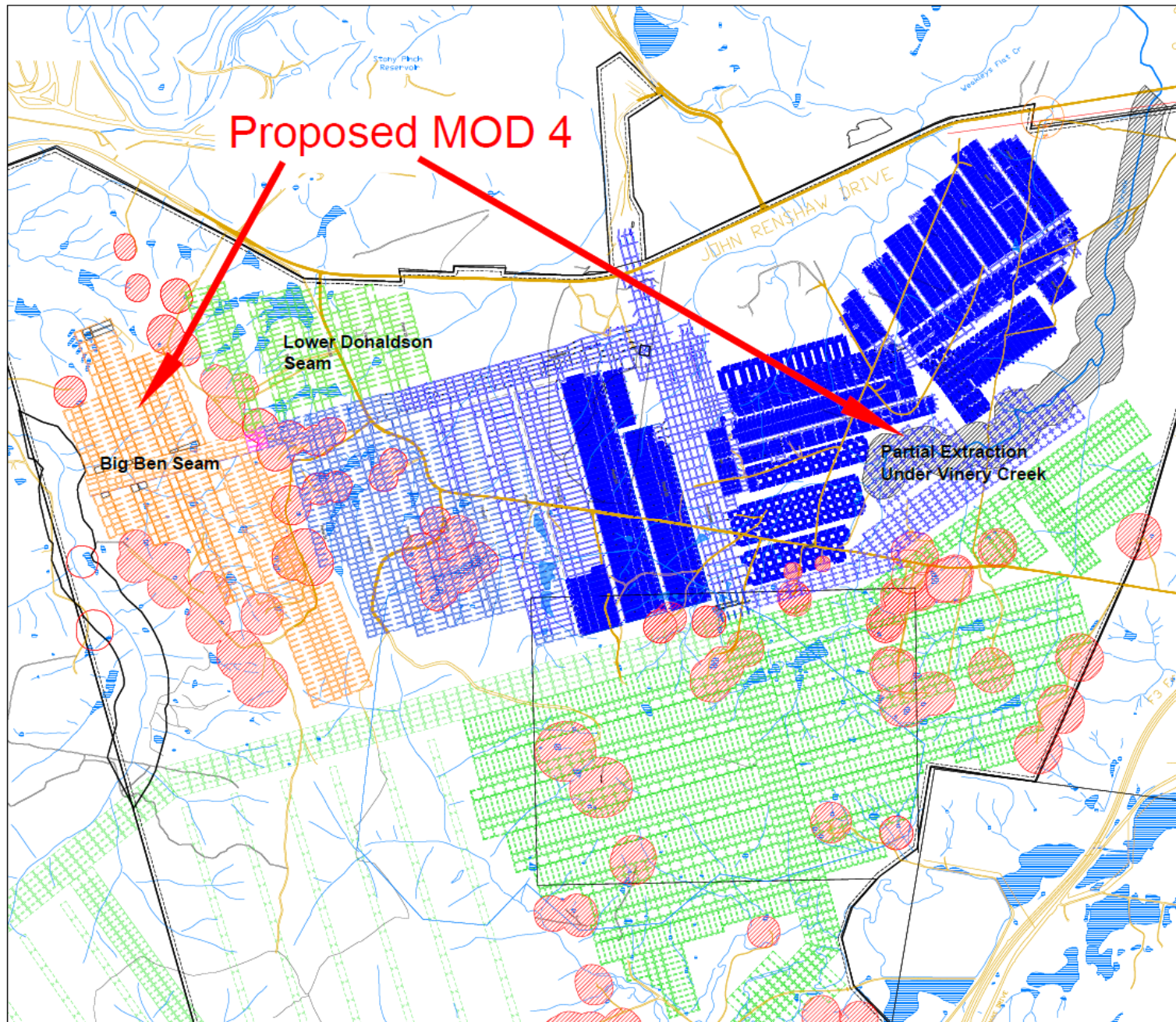


Proposed Lower Donaldson Seam Workings






- Letter sent to DPE requesting determination of Mining in LD seam
- Seam quality in UD seam deteriorates to the West



MOD 4 application



Legend

- Colliery Holding Boundary 
- Upper Donaldson Seam Workings 
- Proposed Lower Donaldson Seam Workings 
- Proposed Big Ben Seam Workings 
- Subsidence Control Zone 



ABEL MINE	
PROPOSED MOD 4	
SCALE : As Shown	DWG No. : mls0102.dwg
DRAWN : M. Weight	REVISION :
CHECKED :	
DATE : 20th August 2014	

COAL