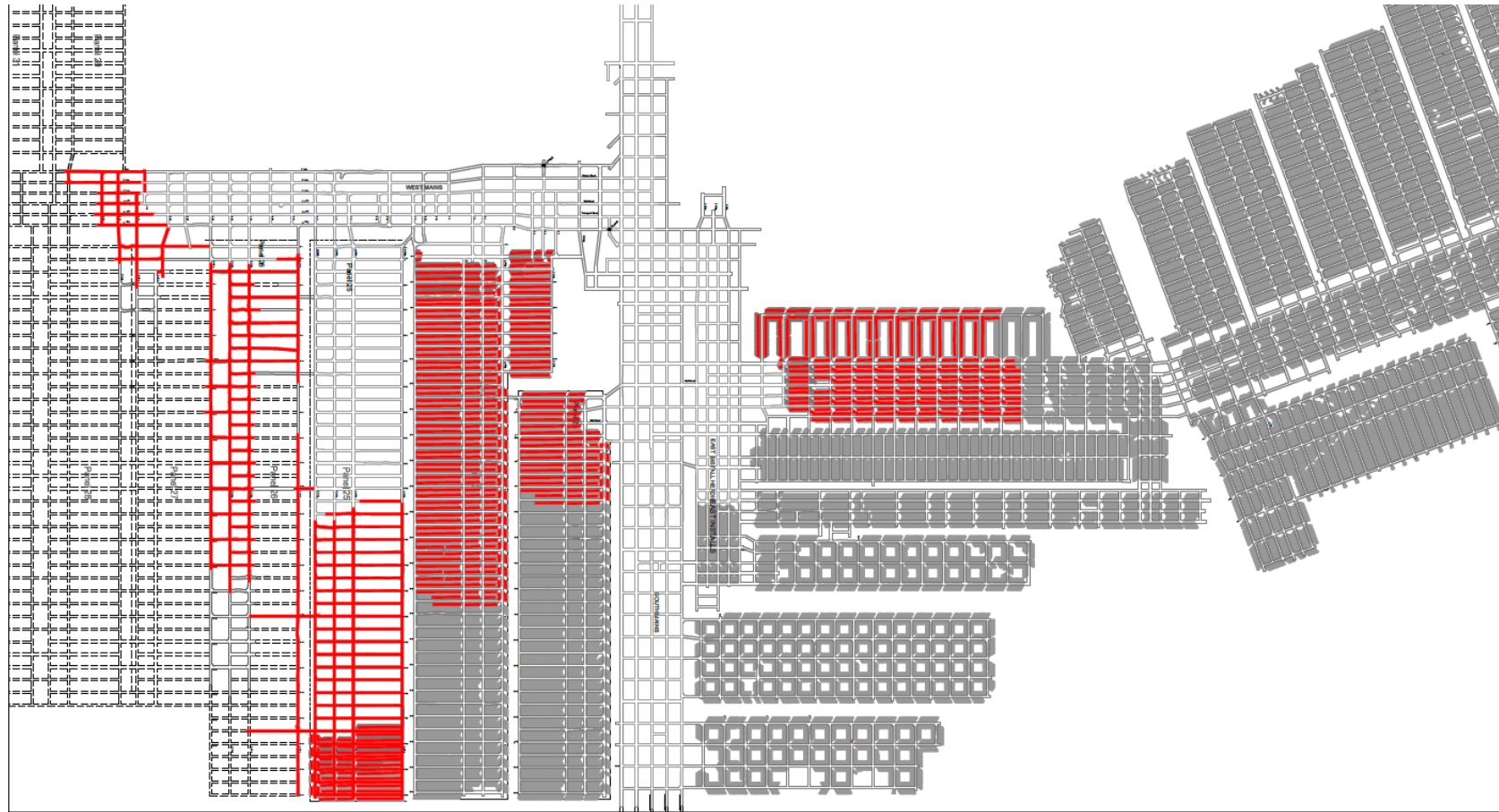


**Donaldson Coal
Abel Mine CCC
Meeting**

30 June 2014



Abel Mine Development – 2014 YTD



Metres Advance for
2014 to date
17,838m



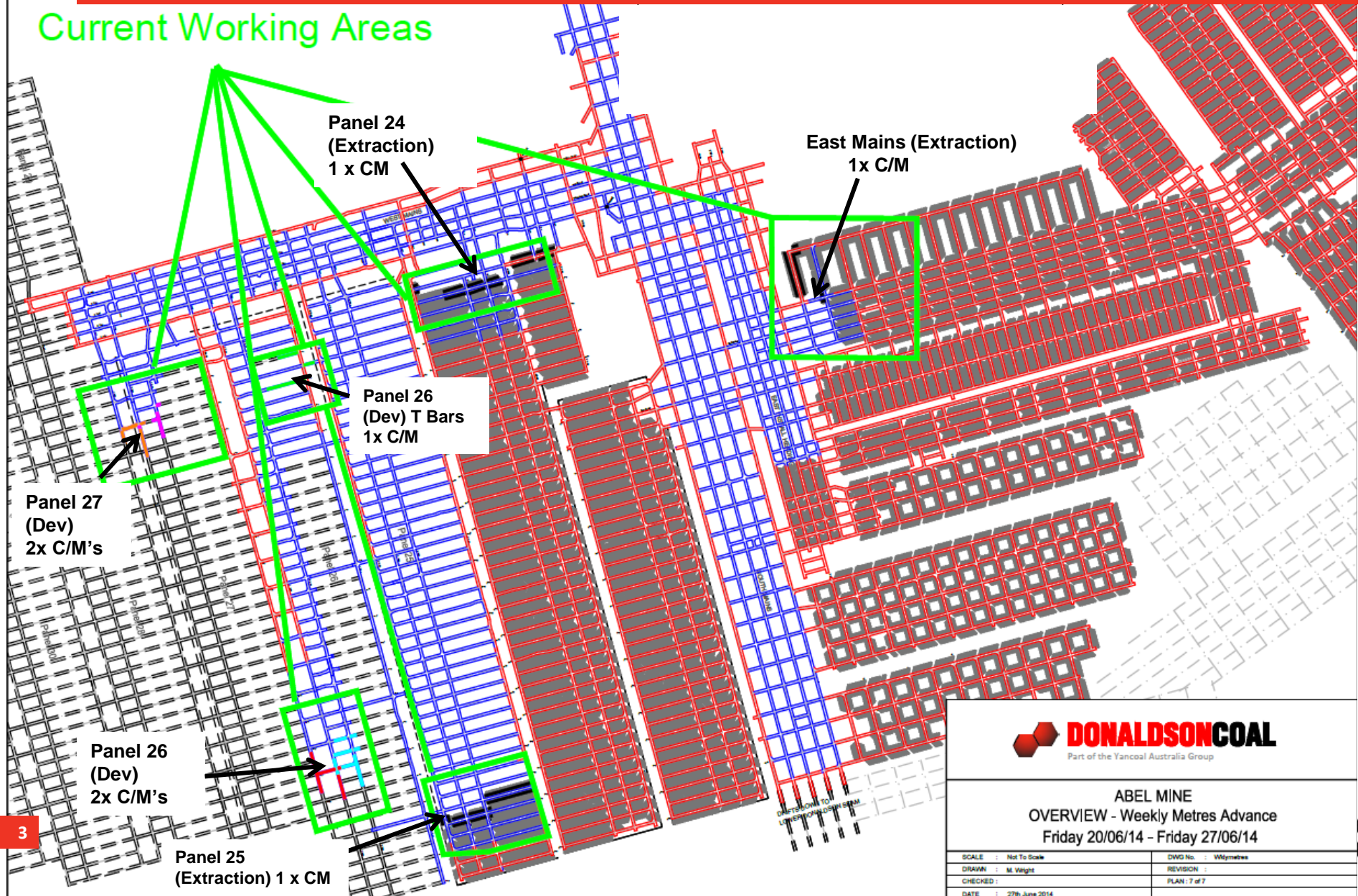
ABEL MINE
Monthly Metres Advance
2014 to date

SCALE : N.T.S.
DRAWN : M. Wright

DWG No. : MPHmetres
REVISION :

Abel Current Mining Areas

Current Working Areas



ABEL MINE
OVERVIEW - Weekly Metres Advance
Friday 20/06/14 - Friday 27/06/14

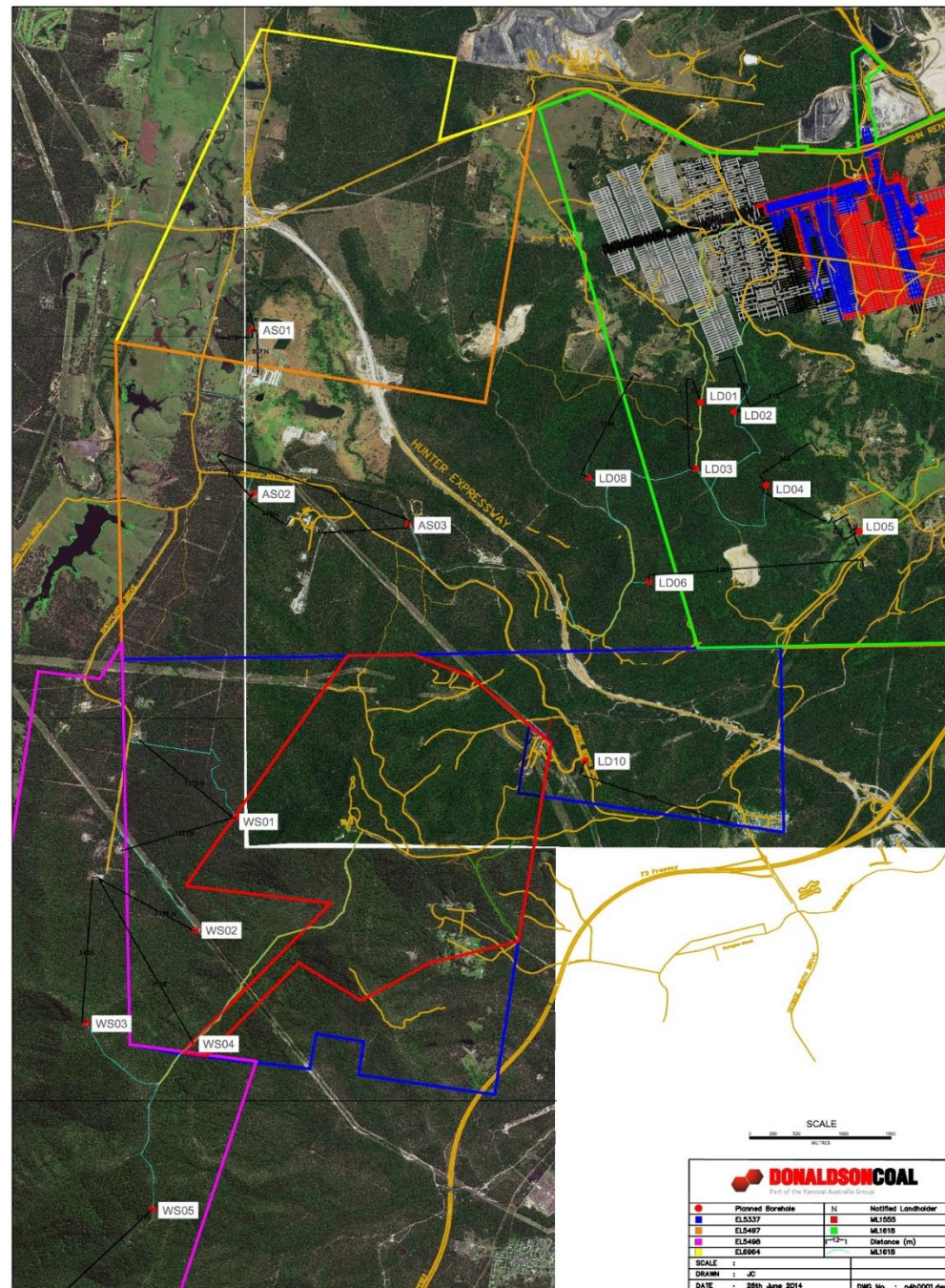
SCALE : Not To Scale	DWG No. : W04m06
DRAWN : M. Wings	REVISION :
CHECKED :	PLAN : 7 of 7
DATE : 27th June 2014	

COAL

Environmental Update

- No Community Complaints
- No Environmental Incidents reported.
- Abel Dam Monitoring Report
- Currently preparing the Annual Environmental Management Report.
- Exploration Drilling program to firm up Life of Mine Coal Resource/Reserves
 - 16 sites
 - Lucas Drilling undertaking the program
 - Commencing July until October, 2014

Exploration





DONALDSONCOAL

Part of the Yancoal Australia Group

CALL FOR SUBMISSIONS
31 March 2014

Community Support Program

The application period is now open for Donaldson Coal's Community Support Program. The Program is designed to assist a wide range of community groups and projects in the Lower Hunter near the Donaldson, Abel and Tasman mines.

Applications for the current allocation close **31 March 2014**.



To download the guidelines and an application form, please visit www.doncoal.com.au and click on top "Community" tab, then Community Support Program.



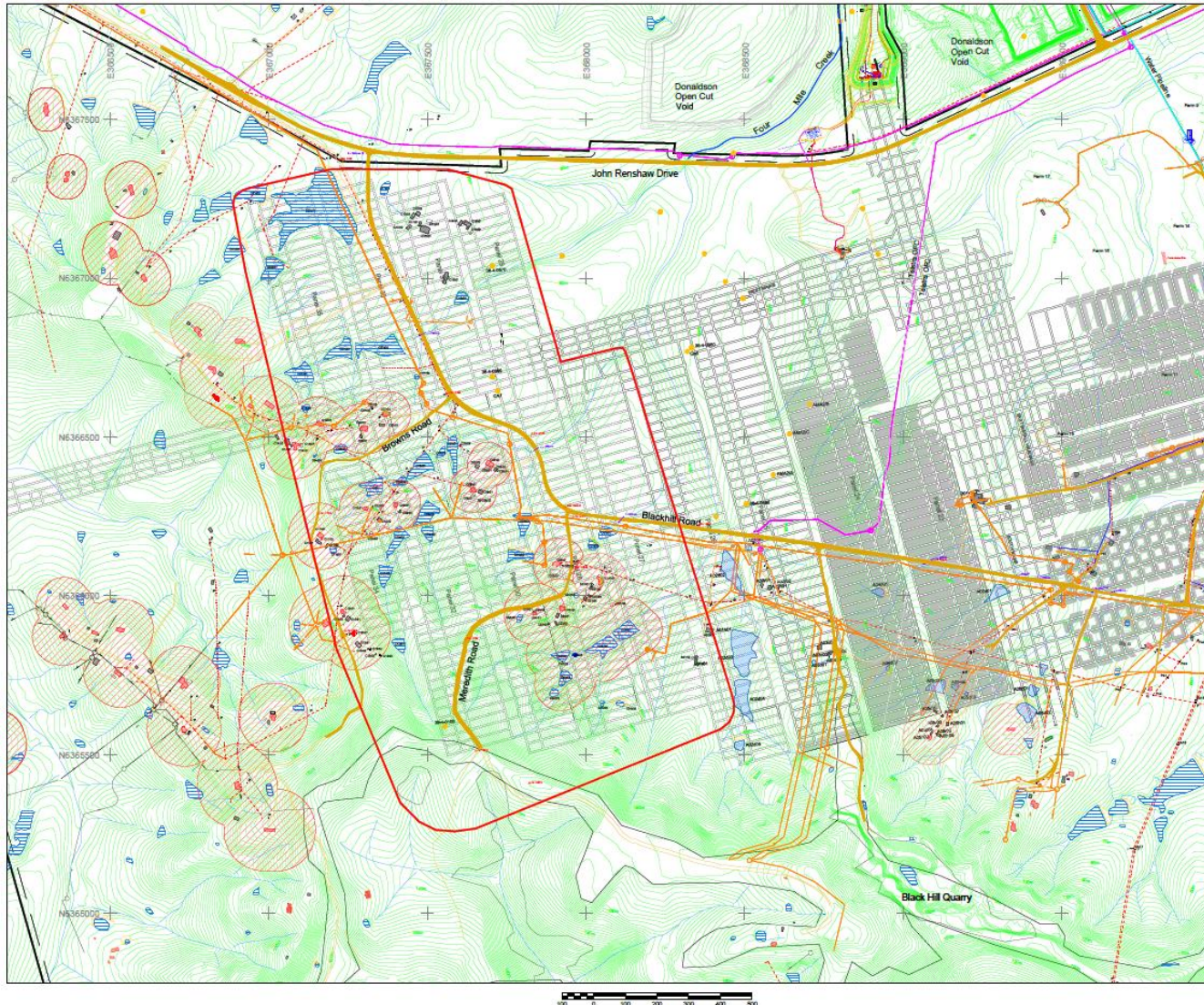
DONALDSONCOAL

Part of the Yancoal Australia Group

The latest round of successful applicants for Donaldson Coal's Community Support Program have been announced with 13 local groups receiving funding support for a wide range of community projects and events

- Kurri Kurri District Preschool Kindergarten – child support program
- Black Creek Aboriginal Corporation – support Naidoc Week
- Maitland Lions Club – new BBQ for community projects
- Real Care – cool room for Friday Free Feed program for youth
- Kurri Kurri Business District Chamber – Billy Card Derby
- Hunter River Agricultural & Horticulture Association Limited – internal energy efficient lighting
- The Lower Hunter Children's Activity Van Association Incorporated – sand pit
- Maitland Region Suicide Prevention Network Inc. – Program "Safe talk" about suicide prevention
- Itinerant Support Service, hearing – an overnight stay at Taronga Zoo by the deaf school
- Cessnock Wine Country Lions Club – a program at Jodie's Place, women's refuge
- Cessnock Performing Arts Centre – program for bullying in schools
- Abermain Public School P&C Association Incorporated – playground equipment
- Variety the Children's Club – community program

SMP Update



- Legend**
- SMP Application Area 4
 - Colliery Holding Boundary
 - Existing Mine Warnings
 - Proposed Mine Warnings
 - Creek (with & 1)
 - Enhanced Creek
 - Building / Other Structures
 - Principal Roadline
 - Road / Track
 - Surface Contour
 - Power Line
 - Power Pole
 - Power Cable
 - 11kV Copper Cable
 - Abandoned Site
 - Substance Containment
 - Under Water Pipeline
 - Survey Station
 - Farm Dam
 - Cultural Place
 - Spring
 - Track
 - Colliery
- Bar Number: 1000 & 5000 & SMP points
A05/02

DONALDSON COAL
Part of the Yancoal Australia Group

ABEL MINE
SMP APPLICATION - AREA 4
PLAN 2 - NATURAL & MAN MADE FEATURES

SCALE	1:4,000	DWG No.	afn1002.dwg
DRAWN	W. Wright	REVISION	
CHECKED	T. Sullivan		
GATE	23rd May 2014		

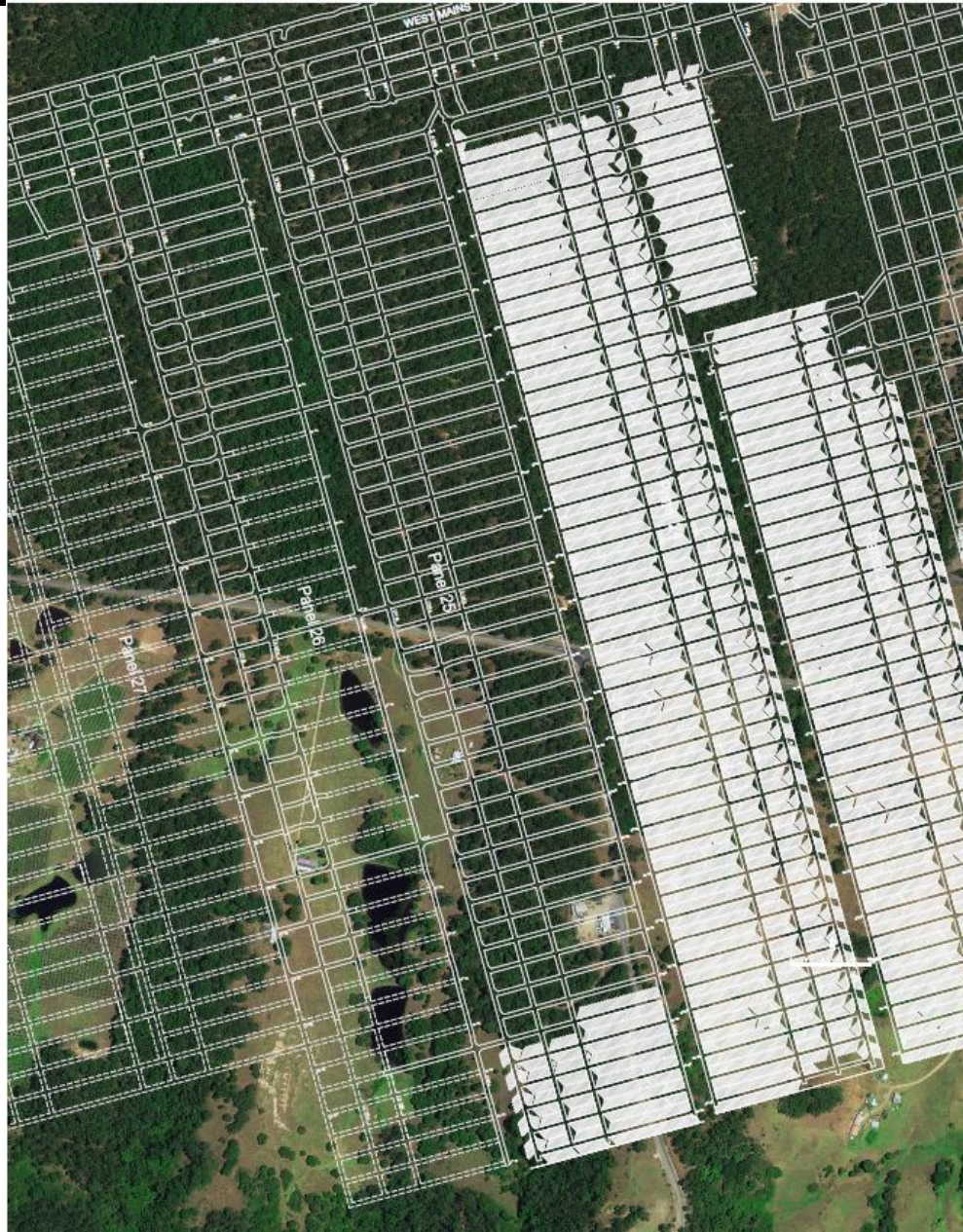
12 March 2021

SMP Update – Area 3

- SMP Area 3 variation submitted to DTIRIS for Panel 26
- East Install Subsidence Monitoring Program submitted to DTIRIS and approved
- Meeting with MSB and Woodbury's Quarry to discuss remediation prior to extraction
- Notification to disturb survey mark submitted to Land Department and approved
- Telstra copper cable MP for Panel 25 approved by DTIRIS
- Abel and End of year report complete
- Telstra OFC and Copper Cable Management Plan for Panel 25 submitted to DTIRIS and approved
- Abel SMP Status report submitted (1/2/14 to 30/5/14)
- Meeting held with 1 property owner re: PSMP development
- Subsidence remediation works carried out on 1 property (fencing)

12 March 2021

Blackhill Road Under Mining Update




- Panels 21,22,23 & 24 have undermined road
- Panel 25 is expect to commencing impacting Blackhill road at the end of September / October (similar monitoring program to be implemented)



SMP/Extraction Plan Area 4 Update

- New Extraction Plan (EP) conditions as per Mod 3 approval Dec 2013
- EP/SMP Area 4 Stakeholder Day – 27 March 2014 (EP new requirement under the MOD 3 approval)
- Ground Truthing EP / SMP Area 4 completed
- EP/SMP Area 4 Risk Assessment held 3 April 2014
- EP / SMP Area 4 – Lodged 30 May 2015
- Advertisement lodged in Newcastle Herald and The Land (14/6/16 & 19/6/14)
- SMP Interagency meeting date TBC
- Expected Approval date – Sep 2014

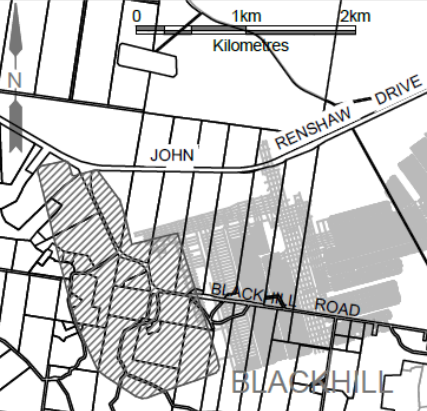
ABEL UNDERGROUND MINE

 **DONALDSON COAL**
Part of the Yancoal Australia Group

Donaldson Coal Pty Ltd ABN 87 073 088 945

Donaldson Coal has lodged an Extraction Plan (EP) application to the Department of Planning and Environment and the Department of Trade and Investment, Regional Infrastructure and Services for Pillar Extraction mining at Abel Mine in the Application Area 4 outlined below. The EP is available for inspection for 30 days at the Abel Mine offices. To arrange an inspection of the EP application, contact Abel Mine on (02) 4015 1100 during business hours. Submissions from the community on the EP application may be made during this period to either:

The Director of Environmental Sustainability
Division of Resources and energy
Department of Trade and Investment, Regional Infrastructure and Services,
PO Box 344 Hunter Region Mail Centre,
NSW 2310
or
The Mine Manager
Abel Mine
PO Box 2275 Greenhills,
NSW 2323



Extraction Plan Application Area 4

Existing Workings

a6a0019.dwg