

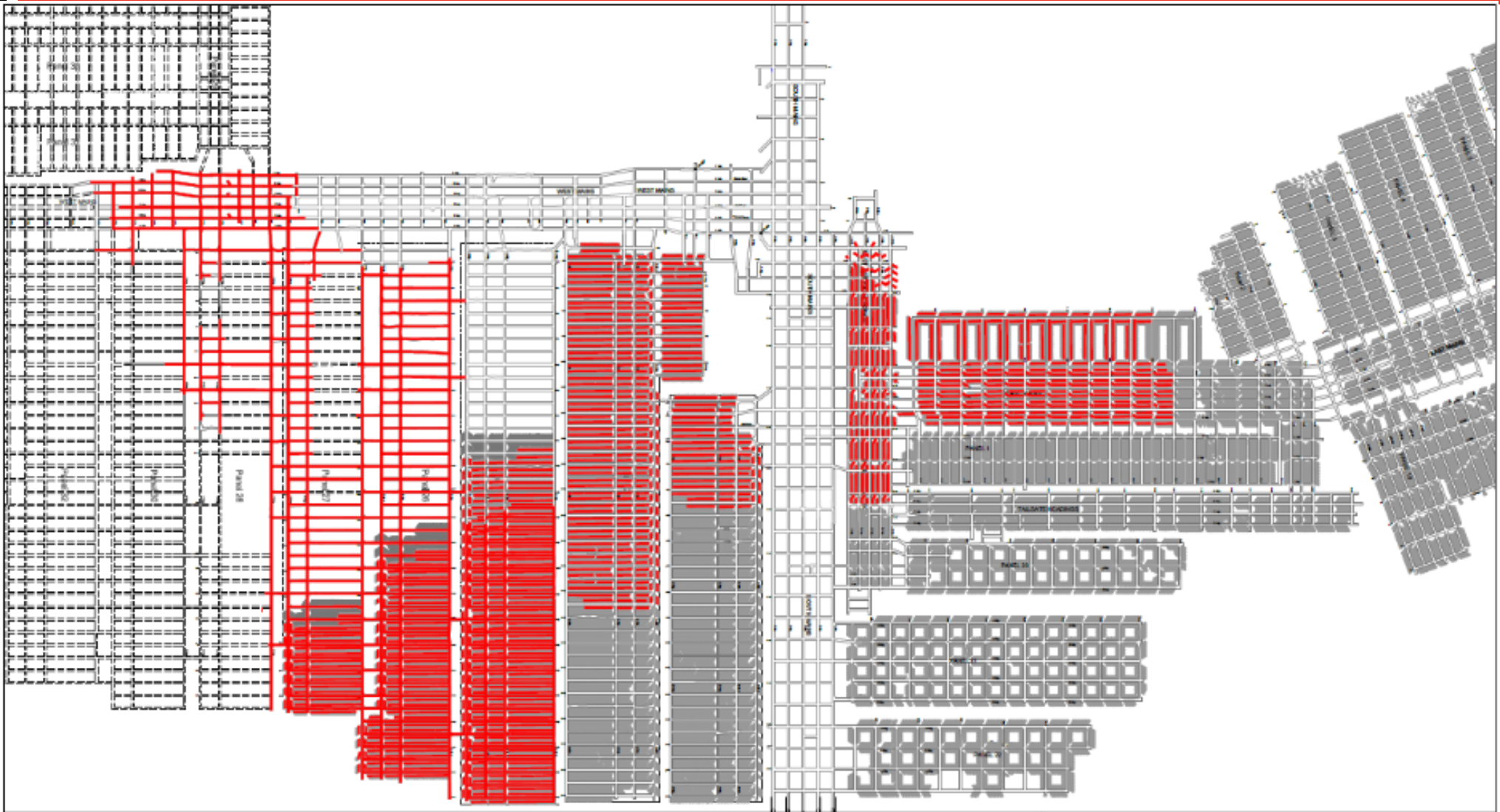
A man wearing a white hard hat, glasses, and a high-visibility yellow vest over a dark blue shirt is smiling and looking towards the camera. He is standing in a field of green, leafy plants. The background is slightly blurred, showing more of the same vegetation.

Donaldson Coal Abel Mine CCC Meeting

15 December 2014

12 December 2014

Abel Mine Development – 2014 YTD



Metres Advance for
2014
33,912m



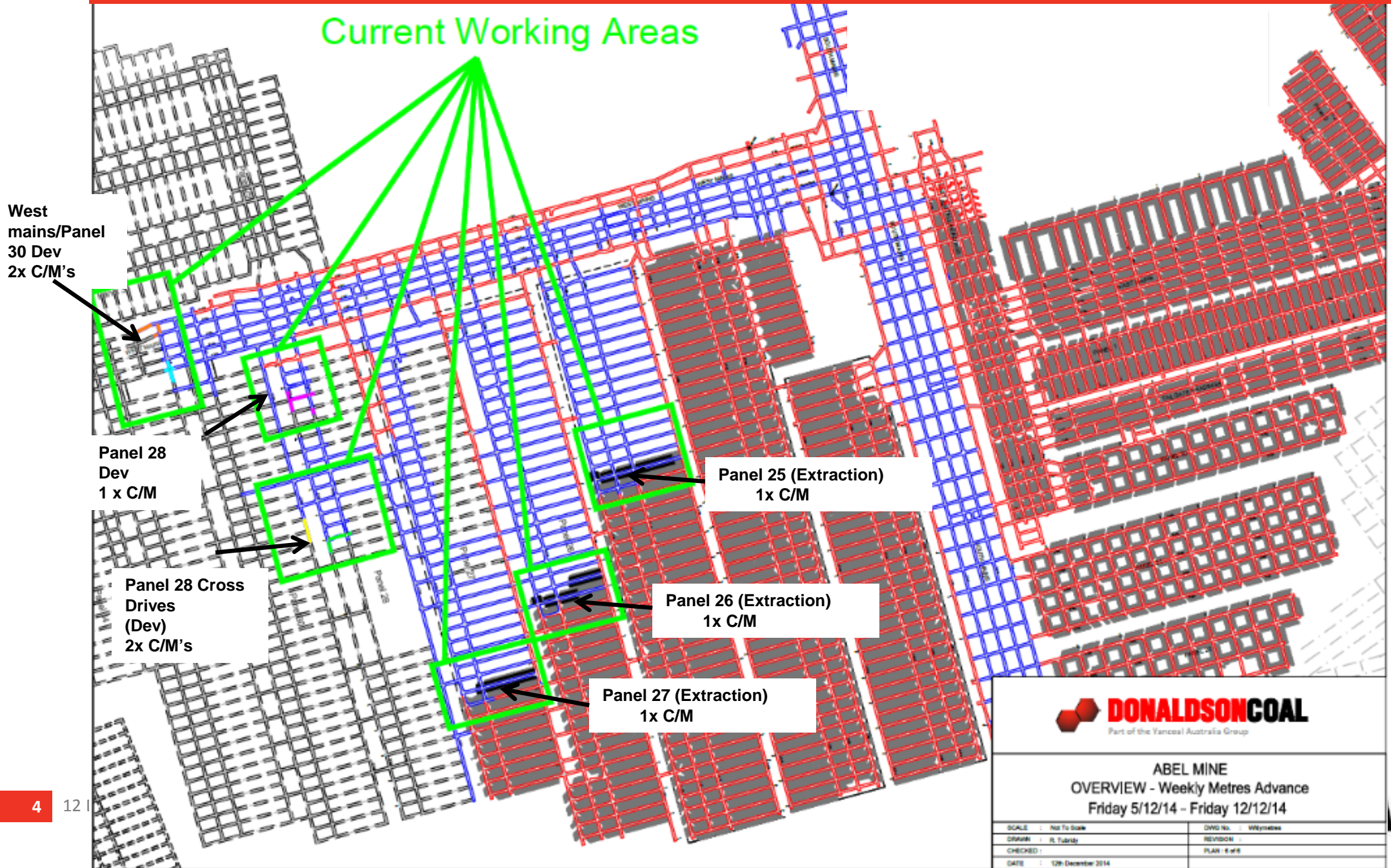
ABEL MINE
Monthly Metres Advance
2014

SCALE : N.T.S.	DWG No. : Mthlymetres
DRAWN : M. Wight	REVISION :

Abel Mine YTD Production (12/12/14)

	Actual	Budget	Variance
Development (m)	33,911.9	43,520	-9,608.4
Development (t)	678,238.0	955,164	-276,926.1
Extraction (t)	1,734,726.0	1,631,328	103,397.8
<i>Total UG ROM (t)</i>	<i>2,412,964</i>	<i>2,586,492</i>	<i>-173,528</i>

Abel Current Mining Areas



ABEL MINE
OVERVIEW - Weekly Metres Advance
 Friday 5/12/14 - Friday 12/12/14

SCALE : Not To Scale	DWG No. : Wymatwe
DRAWN : R. Tandy	REVISION :
CHECKED :	PLAN : 6 of 6
DATE : 12th December 2014	

Environmental Update

- No Community Complaints
- No Environmental Incidents reported.
- Abel Annual Inspection by DRE. No issues raised
- Site inspection of Abel by EPA. No issues raised
- Received Noise Monitoring report for Sept 2014. No issues identified.
- Annual flora fauna monitoring undertaken.
 - Masked Owl roosting tree identified within 100m of the upcast fan site.
 - Powerful Owl adjacent to Donaldson Admin building.
 - Abel Annual Rainforest monitoring undertaken. See Report
 - Macro-invertebrae sampling undertaken of creeks

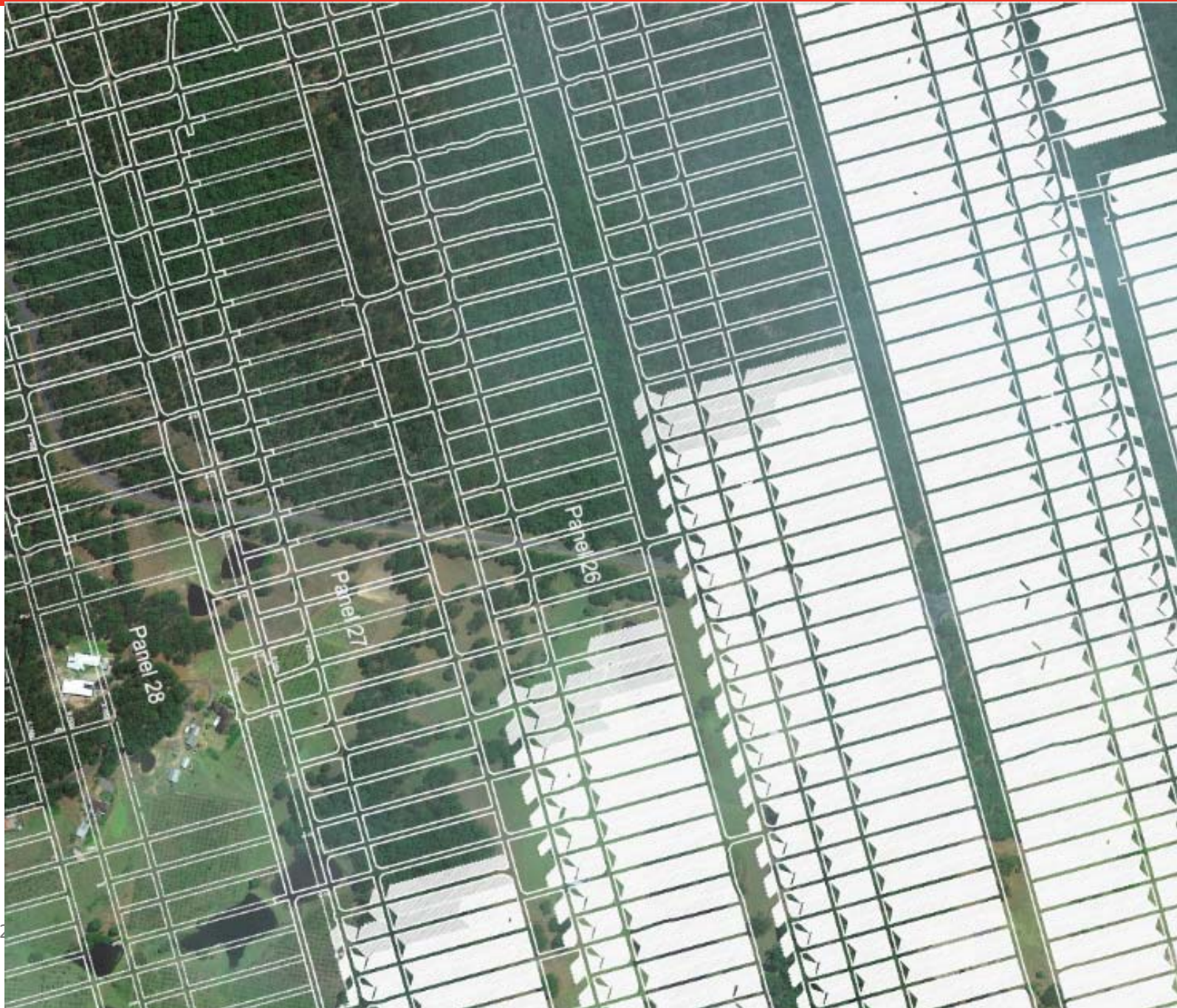
Community Support Program

Benevolent Society	You Sew N Sew
Cessnock Amateur Swimming Club	Learn to Swim Coaching
Cessnock Croquet Club	To assist in the purchase of a cylinder lawn mower.
Cessnock Minor Rugby League Club	New scoreboard to be erected at Mt View Park Cessnock
Harry Meyn Foundation	Harry's House Mobile Retreat
Kurri Kurri Pre-School	Speech Therapy Program
Ozzie Care Services	HR Licence Course to 3 individuals
Samaritans Foundation	Behind the Treasures
Bellbird P& C	Reconstruction of the Netball/Basketball Hard Court Play area.

SMP Update

- EP / SMP Area 4 approved by DPE & DRE 22/9/14.
- EP / SMP Area 4 variation submitted and approved (4 large dams on Osborn Property)
- 4 monthly SMP Status report (31 May to 30 Sep 2014) submitted to DTIRIS
- Panel 27 subs monitoring program submitted to DTIRIS Principal Subsidence Engineer and approved
- Ausgrid Area 4 Management plan was submitted to DTIRIS and approved
- Osborn PSMP and DMMS finalised. DMMS was approved by DTIRIS.
- Site inspection over Area 4 with GHD for slope stability assessment
- Subsidence remediation work carried out on 1 property in relation to cracking (Quarry)
- DTIRIS approval for the removal of subsidence marks in SMP Areas 1 & 2
- Public Roads Management Plan has been prepared and submitted to CCC and MSB for comment
- Blackhill Rd Subsidence Monitoring for Panel 25 (13/10 – 12/12)

Mining Under Blackhill Road



Blackhill Road Under Mining Update



Mining under Blackhill Road Notice of potential impact requiring repairs

Abel Underground Mine wishes to advise that mining in the Upper Donaldson Seam is planned to pass under a section of Blackhill Road from early January 2015 for a period of approximately 2 months.

A Risk Assessment was held in July 2013 to assess the risks associated with mining under Blackhill Road. A Management plan to control the impacts from Mining under Blackhill Road has been developed in consultation with Cessnock City Council, The Mine Subsidence Board, The Department of Trade and Investment and representatives from the local community.

As per the Management Plan, traffic management will include:

- 60km/hour speed limit through the section of road that will be potentially impacted
- A road monitoring crew will be in place 24/7 with personnel on standby to carry out repairs as required and
- Lighting plants and variable message boards will be in place through the night

Mining will cause the road surface to subside along a 600m section of Blackhill Road located approximately 2.2km west of Blackhill Primary School. The extent of the affected part of the road will be sign posted for identification. Monitoring and temporary repairs to the road are expected to take around 2 months depending on the progress of mining and weather.

Abel Underground Mine will continue to work with the Cessnock City Council, the local community and the Mine Subsidence Board to ensure the road remains in a safe and serviceable condition with minimal inconvenience to the public.

For more information please contact:
Phillip Brown
Environment & Community Manager
T:1800 111 271

- Monitoring of Blackhill Road for Panel 26 is due to commence in the first week of January (letter box drop and notice published in newspaper within the next few weeks).

Tasman Rehabilitation

